

Elegant Domicile

雅屋清賞

設計者」水相設計／李智翔、方秋哥

攝影者」岑修賢

空間性質」單層住宅

坐落位置」台灣台北

基地面積」室內面積40.5坪、陽臺面積6.8

主要材料」洞石、白木紋石、花崗石、胡桃實木、特殊布料

設計時間」2012年9月至12月

施工時間」2013年2月至7月

Designer」Waterfrom Design co. Ltd. / Nic Lee, Alf Fang

Photographer」Sam Tsen

Category」Apartment

Location」Taipei city

Size: Interior」134 m², Balcony: 22 m²

Materials」Cavity stone, white stripe stone, granite, walnut wood, special fabric

Design period」September - December 2012

Construction period」February - July 2013

水相設計／李智翔

畢業自紐約Pratt Institute室內設計，2008年成立水相設計，擅長幽默的設計語彙與賦予空間強烈故事性，具有不按牌理出牌的设计特徵，並榮獲2007~2010年間台灣十大室內設計師之一。

得獎記錄

2012台灣室內設計大獎複層住宅空間類TID獎

2012台灣室內設計大獎工作空間類TID獎

2011台灣室內設計大獎住宅空間類TID獎

2011國家金點設計獎

2010台灣室內設計大獎《2007~2010台灣十大設計師》

2010國家金點設計獎

2010台灣室內設計大獎住宅空間類TID獎

2010亞太空間設計協會Excellent Award

2009台灣室內設計大獎商業空間類金獎

Waterfrom Design co. Ltd. / Nic Lee

After graduating from Pratt Institute, Nic returned to Taiwan and formed his own interior design company. He is interested in using humorous motifs in design to express a story associated with its users.

Award Records:

2012 TID Award, apartment space category

2012 TID Award, office space category

2011 TID Award, residential category

2011 National Gold Point Award

2010 Top Ten designer, 2007-2010

2010 National Gold Point Award

2010 TID Award, Residential Space

2010 Excellent Award, Asian Space Design Association

2009 TID Award, Commercial Space

Nic Lee



西向日照，四時暄暖，當光線穿越落地窗牖，徐舒地鋪灑在胡桃木地板、摩挲著洞石牆面的孔隙，樸質空間在光形影跡裡，被一筆筆畫成和暢、淡蕩的場所即景，家屋，也自成一番清賞。在這次天母住宅中，基地能俯瞰蔭濃和遠處磺溪，設計師李智翔在延續慣有的洗鍊線條外，更掣引光線和多種天然素材作用，替當代感家屋沖調出裡應外合的暇豫況味。簡單不僅遺去了光塵駁雜，也讓歸鄉時短住的寄寓，能以誠懇容顏迎接屋主每一次返家。

均衡的尺度與動線

本案為預售住宅進行客戶變更，40坪室內面積，建商原規劃為四房兩廳，零碎的制式格局，不免讓中坪數尺度顯得壅蔽；其次，屋主長年旅居華盛頓，台灣住家縱是短住所用，但為供家人齊聚一堂，依舊期待三房機能。為切中如此需求面，李智翔先解縛原房型窒塞的規劃，並釐整一套開豁的空間尺度與格局，將方正基地予以勻稱剖分，前二分之一面積供公共空間使用，強調寬闊視覺，後二分之一則歸納作獨立臥室。最關鍵地，為讓空間流動性不受房數所箝制，李智翔重新詮釋了「第三房」型態，將之與書房整合。平面佈局上，入玄關後，目光迎睇著一間縱長形書房，接著朝右轉進、繞過主牆後即為開放式客餐廳，迨筆直再往內，可見夾著走道分立的兩間臥室，這條路徑上，是貫穿屋體的南北向主動線，再搭配由東西軸所對稱的剖分的公共與私人兩大領域，讓住家隱然按著十字劃出四塊均衡的分區層次，產生平穩秩序之餘，亦如設計者口中：「矩陣列規格加上特定的排列組合方式，在空間上形成三度進退。」

從公共空間來看，入口處書房，一側立面自玄關延伸而來，另一側是與客廳共享的牆體，因此形成左右皆有實牆、獨立性較高的環境，惟搭配活動式門體後則顯得明暢，亦能和公共區域化成敞闊的平面。李智翔談到：「住宅有特定機能必須滿足——包括佛堂以及三個臥室。但面積有限下，則利用書房整合這些需求。因此（書房）底端靠進露台的區塊擺置了佛桌，前區平日是開放的書房，當格柵門闔上後，便能轉化成和室型的休憩房。」隨空間定義不再恪遵嚴守，鬆弛的使用行為得以蘊蓄，環境可能性也不再因尺寸困境而麻痺。

再探進客廳、廚房所形成之開放空間，兩者以中央走道淺淺劃出分屬。就客廳來看，設計上以布料刷出一片素縞的主牆肌理，這道立面整合了客廳和書房兩側的收納，將電視等突兀感設備隱匿其中。李智翔解釋，電視佔據當代生活核心位置，卻難以修飾其視覺破壞性，在無法剔除下，最後選擇將機體藏放。其次，屋主有烹飪嗜好，不僅廚具品項齊全，更希望配置中島檯使用，但考量坪數不足後，設計便轉置一道吧檯來簡編中島與餐桌的機能，對內一側是內嵌水槽的簡易流理檯，對外則將桌面水平撐高，搭配長腳椅，勾勒出意興鬆快的餐桌風味。最後，直條狀長吧檯更與內部L形廚具結合，圈成一個U形操作區，再搭配玄關轉折進來後、一整道立面的內嵌式電器與收納櫃體，至此功能俱全。而藉由廚房設計，足見「小尺度、大機能」不必然走入蹇澀遲滯的空間窘境，卻能在合宜的家具與動線關係下優雅實踐。

1. 與一般格局較不同，大門入內後先以書房示人，起居室則與書房一牆之隔。如此配置雖源於三房機能的考量，卻也賦予了空間層次感。

1. The spatial layout that met the client's demands yielded an unusual plan in the lobby and living space



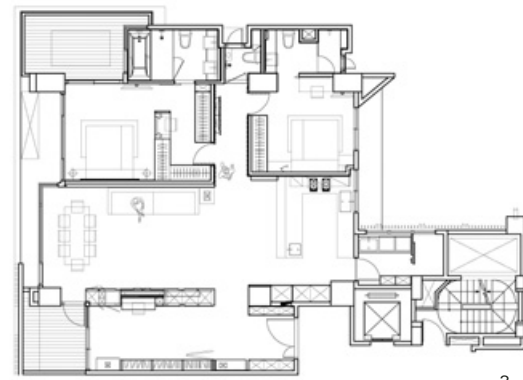
雋永空間的意念

面對美學形式，在屋主鍾情飽滿光線、自然素材下，李智翔引建築師卡洛·斯卡帕（Carlo Scarpa）對於直線的無限性、天然石材的時間性、光線與細節形式的精神，為家屋載敘一份雋永空間的意念。事實上，屋體有西曬問題，但在短住和不以炫畫為苦的條件下，有建築隔熱處理後，室內則大方掬飲了汨汨日照，讓騷動光影撩起另一種空間神采。就像書房晴朗時序裡，每每陽光從西向拂掠，門扉上櫛比細密的格柵總悄靜篩著光，最後散成滿地恍惚瘦長的影蹤，為角落添就一份幽婉深致。

至於牆體表現上，則是深化立面藝術性，讓素材質地美與幾何細節造型，逐一浸潤在光的虛盈現象裡。如此構念下，並搭配屋主

期待返家後能感受明亮氛圍，因此環境多聚合在白色系譜中，接著再轉借多樣性材料替屋內帶來遞換的韻律，就像客廳主牆採用棉麻混紡的布料，但基座一塊矩形則為米白色銹石（花崗石系），一柔一剛，卻也顏色並馳。其次，玄關端景及公共空間背牆所鋪覆的米色洞石，由於兩者錯落相異的水平位置，最後便以材料形成視覺整合、產生一種呼應與協調，而比例均衡的矩塊拼貼與鐵件收邊，也顯見細部的關照與琢磨。

轉向屋體後端，可見立面藝術裝置設於走道，以主臥房外側來看，白色直紋牆除了是隱藏門體設計，一旁立體方塊堆疊、猶若積木的裝置，實則為一道側開門片，內部容積可提供周邊區域做精簡的收納。不僅如此，緊鄰立方體裝置的客浴空間有著開窗引光，因此設計者特別選擇透光不透視的超白條紋玻璃來做門扉，藉著通透材料延續自然日照的沁滲，讓光影戲法為裝置立面刻出明暗，空間得因時態剎那而再三玩味。採訪 | 劉芝君



2. 從玄關望向門扉敞開的書房，窗外即是露臺。前端空間在格柵門闔上後，就是和式型休憩房，底端的區塊則安置了佛桌，長型空間包容了多種機能。3. 平面圖。4.7. 格柵櫛比的線條感在光影作用下，別有一番深韻。5. 玄關端景的米色洞石立面，懸架著一道實木檯面。一側收納櫃體是白色皮革，種種材料，呼應著屋主對天然材料的喜愛。6. 從書房內部向玄關望去，格柵門半掩下，光線滲透依舊濃。

2. A view from the lobby towards the reading room and ends at a balcony 3. Plan 4.7. Mullion screen disperses flat light and gives the interior rich texture patterns 5. Rich material provides the first impression in the lobby space 6. A view from the reading room towards the lobby





8. 書房與客廳共享一道收納主牆，以混紡織品為材料的櫃體在日光撫觸下，有著溫醇柔膩的質地美。9. 喜愛明亮空間氛圍的屋主，西曬陽光成為了優點。而為了創造明亮居家氛圍，除了褐色胡桃實木地板，立面皆以淺色打亮明燦神采。10. 從客廳望向開放式廚房，為了保持明暢的動線，設計特別以一道長吧檯融合餐桌與中島的機能，同時再與內側L型廚具結合，形成U型操作區。



8



9



10

8. A partition wall set between the living room and reading room 9. Even showered under bright sun-light, the room enjoys its energetic gesture 10. U shaped kitchen space and its central island table layout

This Tienmu apartment enjoys cozy ambience that provides the essence of home. It was the designer's intention that he use the simplest materials and optimizes the quality of natural light to deliver this home a full sense of coziness.

New layout

This apartment is 134 square metres and needed an immediate revision because the existing plan was completely not functional. The client, who spends most of his time in US, needs this apartment for short stays and a spot for family gatherings. Keeping three bedrooms but revised by a new plan, Nic Lee tried to satisfy his client so he proposed creative ideas for possible compromise such as one room that can cope with necessary changes to be either a bedroom or a study room.

The plan displays a dominating bedroom behind the lobby space and to its right is the main public zone - living room and dining room. A pathway leads towards the end where two bedrooms are set face to face. The main orientation system divides this apartment into two sectors balancing each other and the cross shaped layout is a quite visible sign which signifies harmonized living.

In the public zone there stands a reading room and living room on one side. And a corner is set for a Buddhist ritual space. Nic said his challenge was to meet the client's entire requirements as the space seemed not big enough to provide all the functional spaces. He

integrated a reading space and one bedroom into a Japanese style room while a mullion panel was built between this space and a corner facing balcony. This corner is reserved for a Buddhist table and ritual practice.

A light color panel wall sets a fundamental border between the living room and private sector; this wall was given functional integration to incorporate a TV and other facilities which are cleverly sealed behind some secret compartments. The client's interest in cooking was uncompromised and an island table is in demand to display his cooking art. A bar table that joins with a rather smaller island table gives the cooking and dining ample space. The space has a U shaped layout and all necessary electronic devices are all economically integrated into the kitchenware and storage partition.

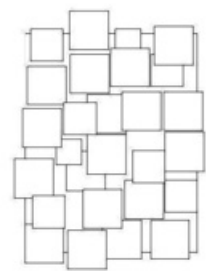
Elegancy

Nic believes the beauty of space comes from light and texture; his beloved architect Carlo Scarpa inspired him so much that he carefully takes care of the relationship between material texture and its response to natural light. Light is introduced in a designated way such as mullion panel which disperses light into strips, patterned onto the floors.



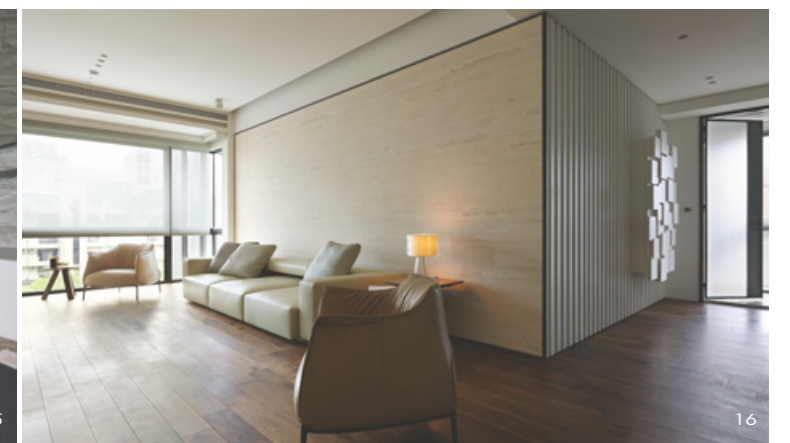
11. 長吧檯一側的立面，是各種內嵌式電器與收納櫃，結合U型操作區，讓廚房機能完備。12. 開放式的客廳與廚房，兩者間的走道劃出分屬，而玄關端景的米色洞石也鋪覆了兩側背牆，並以不鏽鋼收邊帶出立體效果。13. 放望整個公共空間。14. 走道櫃配置圖。15. 衛浴空間以灰木紋石鋪覆，由於空間不算寬綽，因此材料顯得整合，避免視覺繁縟。16. 從客廳望向臥房通道，可窺見立面有著紋路與材料的轉折。

11. Bar table layout and precise layout of electronic appliances and storage 12. Living room and kitchen/dining space 13. A view towards the public zone 14. Pathway cabinets - Design drawing 15. Master bathroom and its color treatment 16. A view from the bedroom towards the pathway



Light enriches the expression of the main partition wall and gives it a relief pattern. Light is an element that gives life to the space and always provides a welcoming gesture to one who enters the door. It was also a designer's intention to soften the single light color on the wall; there appear diversified materials and textures; cotton-linen fabric creates a dialogue with the beige color granite therefore creating a vivid contrast. All the details were carefully plotted such as the geometrical pattern cavity stone link with some pieces of metal panels in beautiful joints. The pathway is like a secret channel and shows off an interesting pattern accumulated by staging cubes. This artistic featured pattern is not just for fun but can also be used as storage. Light permeating in from the adjacent bathroom gives the pathway a sense of harmony.

14



15

16



17. 臥房通道的牆體，在直紋和堆疊的幾何方塊中做出藝術裝置表現。18. 從臥房望向門外通道。19. 牆面裝飾細部，實際上面體可掀開做收納之用。20. 主臥房空間採用了公共空間一致的材料與顏色語彙，包括白色皮革以及胡桃木地板。
17. Pathway wall surface and its geometrical patterns 18. A view from the bedroom towards the pathway 19. Partition treatment for storage space 20. Master bedroom and its color treatment

建材分析 Material Analysis

屋主喜愛天然素材與明燦空間感，故案中大量用木頭、石材作裝潢材料，同時為使空間輕盈，除了地板為棕色胡桃實木，立面建材皆用淺色系創造飽滿日照的氛圍。包括玄關收納櫃襯以白色皮革，客廳主牆則用Holly Hunt的白色織品帶來另一種質地韻味；至於米黃色洞石，則從玄關端景一路延伸至公共區域的背牆。臥房空間材質相同，色彩也維持下重上輕的處理，唯浴室空間則轉以灰木紋花崗石跳脫氛圍。此外，屋主亦看重建材環保性，因此塗料上也選擇德國無毒產品。
Warm color and natural materials was used extensively. The floor has brown color walnut wood and the wall is clad with light color materials such as the storage in the lobby space uses white color leather while the living room partition uses Holly Hunt's white fabric. The floor has beige color cavity stone paving and the floor extends from the living space to the wall surface. Bedroom and bathroom has similar light color materials. The painted surface used only non-toxic paint.

溝通重點 Communication Notes

本案屋主長年旅居華盛頓，不定期往返上海與台灣，新購置的天母住家為歸鄉時短居所用，空間依舊要載負完整的住家機能性，其中包括佛堂以及三房需求（兩間需配有衛浴）。其次，屋主有烹飪習慣，廚房配有健全機能外，也希冀配置中島檯，但礙於坪數緊湊，設計上則轉以長吧檯形式來呈現，並讓整體廚具形成一個U型環繞動線，依序陳列吧檯、小水槽、爐具等。另一方面，長年旅居美國下，屋主喜愛充沛飽滿的居家採光，因此設計上也不避開西曬陽光，肆意引入，而喜歡美式住家的屋主，設計者在當代空間的表現形式中，仍做出比較細微的古典線條詮釋，不使空間過分冷冽。
The client uses this apartment as a short stay domicile yet he still needed fully capacity like a typical apartment and even demands a family Buddhist temple. He loves cooking and definitely required an island style cooking system in the kitchen. All the demands created a difficult challenge for not just the layout but also the utility system. Yet there was one odd demand, the client wanted the sun-light to be fully admitted without even any design action to avoid extreme summer heat.