

Composite New Expression

# 複合新表情

| Graceful Residences |



1. 廳區去除茶几設置，讓家庭成員擁有開闊的共聚空間。2. 自入口玄關伸展的弧牆轉折出隧道般的神祕感。  
1. A living room tea-table invites family members to gather around 2. Curving partition in the foyer and the tunnel-like space



M. Design @ 石坊空間設計研究／郭宗翰  
實踐大學 設計學院兼任講師 2005-迄今  
石坊空間設計研究 設計總監 2002-迄今  
香港商穆氏設計 設計師 2000-2002  
英國北倫敦大學建築設計系碩士 1999-2000  
英國倫敦藝術大學空間設計系學士 1997- 1999  
英國倫敦市政府大學基礎藝術設計國家檢定課程1996-1997

M. Design / Stephen Kuo  
2005- now, Lecturer, Shih Chien University  
2005- now, Design Director, M. Design  
2000-2002, designer, M. Moser, HK  
1999-2000, M.A. University of North London  
1997-1999, B.A. University of Arts London  
1996-1997, Diploma, City College of London

設計者」 M. Design 石坊空間設計研究／郭宗翰  
參與設計」 魏鈺昆  
攝影者」 KYLE  
空間性質」 住宅空間  
空間地點」 台北市  
室內面積」 28.5坪  
使用建材」 PANDOMO、實木、玻璃、鐵件、馬賽克、振石子  
設計時間」 2008年10月至12月  
施工時間」 2009年1月至4月

Designer」 M. Design/ Stephen Kuo  
Participant」 Y. K. Wei  
Photographer」 Kyle  
Location」 Taipei  
Size」 94㎡  
Materials」 Pandomo, solid wood, glass, steel member, mosaic, close lightly pebble surface treatment  
Design period」 October - December 2008  
Construction period」 January - April 2009



生活在群居社會中，我們難以避免的將外界的價值觀套用於自身，也常以自己推測的想像來框架他人，在無形中束縛內心，阻礙了生活伸展的寬度。「給我一處看起來不像是我的生活空間」是這個家男主人最初的期待。服務於金融業的他散發著俐落嚴謹的特質，設計師並非以屋主職業、形象開始定位，推演出對方特有的生活空間，而是探掘空間本身條件、屋主嚮往建築的基因，逐漸發展設計脈絡，雙雙打破對居住者與空間的熟悉印象，拓展了生活寬度，也跳脫出先入為主的保守測量。

#### 親密而互重

本案居住成員為夫妻與二位國中男孩所組成的小家庭，住宅原有格局相當緊密。在新規劃裡，除了基本的生活機能，也必需定出三個私密空間，滿足家庭成員擁有獨立場域的需求。設計師拆除原有隔局後，從機能定義出空間基本架構，大塊面的切分開公私兩大場域。客廳、餐廳、廚區整合成一座開放式廳區，廳區去除傳統的茶几設置，讓家庭成員能聚集在此聽音樂、看書、談天或各自活動，切合居住者重視私人生活，假日戀家的生活型態。客廳主牆兩翼延伸出活動門片，兩扇門片後方各別通往男孩房區與主臥套房。用兩進式格局規劃男孩房區，活動門片將動線輸往兩人的共同書房，書房長廊路徑再各自分流至兩間臥房，創造出兄弟討論課業、生活的交流小廳，不僅增進交集也尊重個人隱私。

將朝看中庭的窗口作為端景主題，保留陽台提供接觸戶外的介面，書房區特意封閉原有的小側窗，空間鋪覆灰白色調，讓清簡背景襯托出窗框內的風光。





### 想像不設限

設計師運用線條雕塑空間，利用優美弧線引導行進動向。自入口玄關處伸展的弧牆轉折出隧道般的神祕感，底端深處漫入廳區傳來的採光，在難以一眼望盡、模糊既定想像的操作手法下，讓人邁入了停頓、思索的情緒裡，重新辨識屋主在職業之外的個人本質。同時，玄關的弧曲量體納入了收納、浴廁等機能，平滑流暢的線條延伸至廳區的天花板，宛如穿梭於空間內的動感線條，解放了居宅格局工整切割的既定想像。

開放式廚區運用活動門牆變化立面表情。中島餐桌的兩側保留入口，讓廚區的回轉動線銜接廳區，維繫公共空間的開闊性。利用餐桌可延伸的抽板式桌面、活動推牆、門片等元素彈性界定餐廚區與客廳的連結尺度，在開閣之間玩味各款表情。



空間大量運用柚木的復古色調及其山形紋絡微量釀造六〇年代復古情懷，一致性的木質天然紋路模糊了廁所、廚區門片的開口線條，完整空間整體氛圍。現代感的天花板燈帶、空間強烈的分割線語彙、廳區盤多磨地坪冷調的色差層次等元素，靜靜的與牆面流露的復古風情構成反差，張顯出本案想像不設限的設計精神。採訪「劉蕙蘋

3.4. 開放式廚區運用活動門牆變化立面表情，調節串連客廳的尺度。5. 玄關廊道利用燈帶加強切割造型，平滑流暢的線條延伸至廳區的天花板。6. 廚區，沿用廳區的帶狀造型於備餐檯及天花板燈帶。7. 大量運用柚木的復古色調及其山形紋絡釀造復古情懷。

3. 4. Open-style kitchen and changing phrases of the flexible partition 5. Lighting fixtures and band patterns on the ceiling extends to the public zone 6. Kitchen view of preparatory table and ceiling light fixtures 7. Teak wood and wood texture bring an impression of nostalgia







9

8. 男孩房區的共用書房，創造討論課業與生活的交流小廳。9. 客廳主牆兩側各別通往男孩房區與主臥套房。10. 男孩房區，門片用鑽石面切割作為造型，衣櫃的裝飾線溝具有取手功能。11. 自書房回望客廳。  
 8. Reading space for boys 9. Doors that lead to the boy's rooms and master bedroom 10. Door frames to enter the boys' rooms and closet detail designs 11. A view from the reading space towards the living room



10

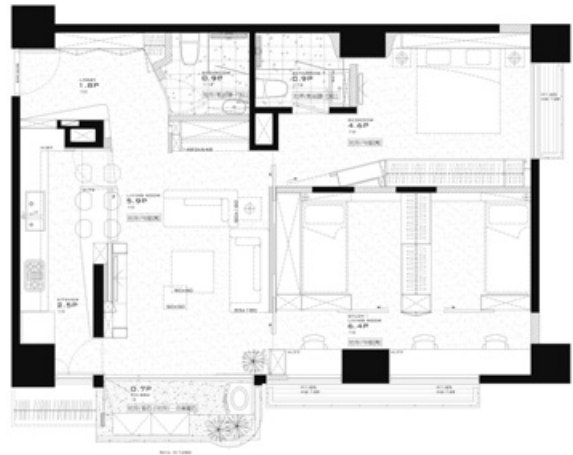


11





12



13



14



15



16

Life in the big city is subject to values of a collective ideology; man loses only because he has no chance to wander around. This client wished something would really happen in his apartment. He said: "Please give me a place to live that is different from what it used to be." This was the challenge for both the client and designer; Stephen, the designer, abandoned his practice routine but came back to the idea of the space itself; he imagined the living space would totally expand the client's living pattern and his daily activity.

### Intimacy in privacy control

Since the apartment houses the client's family with two teenage boys, the space was not truly enough for an ample living pattern. Stephen completely redesigned the layout; he grouped every public zone into a single domain - living, dining and kitchen space. Every family member can dwell in his corner to enjoy reading, listening to music and chatting. Two flexible doorframes, in the main partition wall in the public zone, lead the family members to their private rooms; one leads to the master bedroom, the other to the kids' rooms. The boy's room is ushered in by a transitional space, housing a reading and discussion corner. There are two bedrooms instead of one that offers better privacy for the fast growing-up kids.

A tiny window facing the courtyard provides an imaginative outlet for a view; the reading space has only one window to introduce soft reflective light to the room; subtle gray color increases the lighting effect in the reading space.

### Ample creative ideas

Curvature brings a different view of this apartment; a smooth curving wall leads from the foyer gradually unveiling a tunnel-like pathway; light increases the layering of the spatial depth and induces a further pondering on the process of entering from "profane" to "sacred" space. This curving wall is also built for utilitarian purpose; it houses a mass amount of storage space and a lavatory.

An open-style kitchen is possibly hidden by a flexible partition. A preparation table set in a central position allows linkage to the dining/living space. A custom-designed dining table utilizes a mechanism to expand its size for various occasions. The total impression of the interior is largely dominated by material and color; teak wood and its fine polished texture bring a nostalgic favor and redefine the value of the family. While the Pandomo floor and lighting fixtures on the ceiling provide a slightly contrasting dialogue to the traditional mood. Translated by Ray S.C.Chu & David Mark Riz

12. 現況圖。13. 平面圖。14. 主臥房，馬賽克拼貼的弧牆延伸至廁區，呼應廳區的線條語彙。15. 主臥房浴室。16. 主臥房玄關的斜面鏡牆，具有引導動線的意涵。鏡面發揮借景與反射採光的效益，將戶外綠意延攔至室內。

12. Existing plan 13. Plan after conversion 14. Master bedroom view. Mosaic wall extends from the partition to the bathroom 15. Master bathroom 16. Slanting mirror wall in the master bedroom; the angle optimizes the natural light entering the room