

Surfing Rhythm

逐浪行律

設計者 陸希傑設計事業有限公司 / 陸希傑
參與者 林麗紋 莊明哲 陳昭雅 張瓊之 曹均達 陳怡曉 陳怡如
空間佈置 黃麗菁
攝影者 圖起乘李國民攝影事務所
空間性質 公共空間與賣品屋
坐落位置 台灣
主要材料 棕櫚灰仿古石材、銀狐白大理石、鍍鈦金屬、菊水塗料、橡木、鐵刀木、鋼琴烤漆、沖孔金屬板
面積 公共空間 / 100 坪、賣品屋 / 70 坪
完工日期 2016 年 6 月

Designer CJ Studio/ Shi-Chieh Lu
Participants Li-Wen Lin, Ming-Zhe Zhuang, Zhao-Ya Chen, Qiong-Zhi Zhang, Jun-Da Cao, Yi-Xiao Chen, Yi-Ru Chen
Interior Furnishing Vivian Huang
Photographer Figure x Lee Kuo-Min Studio
Category Sale unit and public space furnishing
Location Taiwan
Materials antique treatment stone, silver fox marble, titanium plated metal plate, paint, oak wood, hardwood, piano surface paint, perforated metal board
Size Public space/ 331m², sample sale unit/ 231m²
Completion period June 2016



於是乎公設藉巨型編織裝置，從如擬波蕩起伏的流線造型來喻之軟性、迤邐此等水動意象；住宅則造室內弧牆來呼應建築有機輪廓，讓屋裡屋外皆韜韞著如觀浪起的行律。

暮暮萋萋之地欽然矗立一住宅大廈，其正立面迎颯著廣袤且草茵芊蕪的公園，建築後院則闢有枝葉蹀躞小庭來自娛賞，對此渠渠夏屋，設計師陸希傑不僅執行了賣品屋裝修，亦同時遍及大廳、梯廳及停車場等公設相關擊劃。除了基地四方滿是龍蔥況味，量體輪廓更從波浪律動之形加以摹繪而成，所以陸希傑發乎一種對自然與建築面的觀照，逕自蘸取有機線條於空間中酣暢摺布，從裡應外合之思來擬構內環境主題。他解釋：「整個建案具有生態意涵，從公共空間到賣品屋，主要概念就是將自然、有機的線條進一步與動線、材質和燈光結合。」於是乎公設藉巨型編織裝置，從如擬波蕩起伏的流線造型來喻之軟性、迤邐此等水動意象；住宅則砌一道室內弧牆來呼應建築有機體裁，讓屋裡屋外皆韜韞著如觀浪起的行律。

公設：有機為題 編織化用

瞻顧縱深六米大廳，齊高落地窗頂天而下顯得氣象軒豁，線條語彙尤其洗鍊，僅見寥寥幾筆鍍鈦框構整合玻璃立面系統，當皮層清湛無贅時，則眼際聘望能深、亦得前方咫尺草茵和翳蒼樹籬霑溉。勾勒出情態雋爽的內外關係後，為使納迎主客的大廳有道「景」來輻集視覺，而非徒留一空疏清寡環境感，於是陸希傑便委請南投匠師徐啓盛編織大型竹藝，將之挺挺擊舉於平面中軸線上。

端看此作，棋盤狀竹編皮層圍起柱子植生牆朝天舒展，它儼如口徑三分開海芋，用漏斗形苞片裹住長柄花穗，裝置直豎有嶸峴昂藏氣勢，唯優柔弧度顯得一派窈窕嫵娜。對此陸希傑解釋：「先利用電腦計算造型再進行手工編織，希望它帶點有機造型也不乏數位的科技感，尤其裝置位在中央，本身能對平面產生劃分左右的效果。」而為烘襯巨型竹藝，天花再用一道橢圓式間接燈光來相映，達到意象構連。在環境韻味上，因細節摺除稠稠穢穢材料堆疊而別有明澹氣色，僅用棕櫚灰石材鋪地、銀狐白大理石綴飾局部立面，其餘則是白漆與水泥，目的乃是將天地壁看作素淨底布，讓竹藝自然、流線婉變的體態突顯。

Shi-Chieh Lu



陸希傑設計事業有限公司 / 陸希傑
1965 年出生於台北，1989 年畢業於東海大學建築系，1993 年取得英國 AA 建築聯盟碩士學位，在英國期間曾於 Raoul Bunschoten 事務所擔任設計師，而後回國成立 CJ Studio，從事建築及室內設計、家具設計、產品設計等相關研究開發，曾任教於實踐設計學院空間設計系、銘傳大學空間設計系、台北科技大學、東海大學建築系、國立交通大學建築研究所，並榮獲國內外重要設計首獎。著有《鍛造視差》(2003)、《空間設計要思考的是》(2015) 及《形緣》(2015)。

CJ Studio/ Shi-Chieh Lu
Lu was born in 1965 and received a B.A. from THCU and a B.A. from Architecture Association. He was taught by Raoul Bunschoten and worked with him during an internship. He later returned to Taiwan and established his own firm CJ Studio. He has taught in many universities in Taiwan as well as won many notable design awards. He is the author of a number of books including "Forging Parallax" (2003), "What is Space" (2015), and "Catalogue" (2015.)

1. 委請南投埔里的匠師為空間打造大型竹藝裝置。
1. Bamboo art work created by bamboo art master



盪繞前前後後偌大公設區域，陸希傑所囊括的處理實際上廣泛得多，不僅大廳，尚有建築周邊道路鋪面及半戶外簷下空間的整理和質感提升。至於停車場內，亦得見幾道巨型的波浪式編織物如一幢幢幔垂掛於天花，其嫩綠、片狀、掀動之貌有種獨特柔軟感和音樂性，清新顏色搭配如翱如游丰姿，為昏霧且封閉的地下空間挹注些許豫朗情霽。

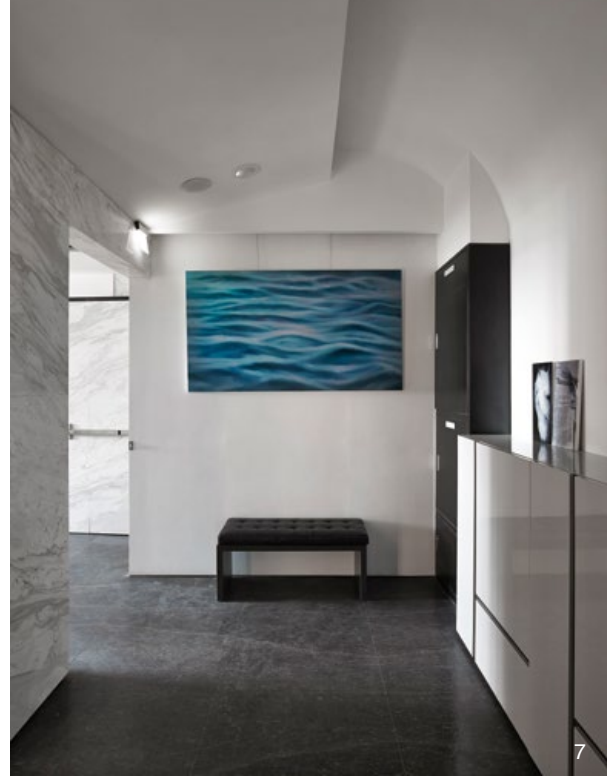
實品屋：弧牆破題 動線層遞

屋子設計內蘊則緊緊在一道段落式的圓弧牆面，它定義了整個場域的結構表情，也起了動線進退與格局調控作用。陸希傑談到因大扇落地窗牖面對露臺一側，建築造型剛好是道波浪層，所以室內便朝同個方向立起弧牆，使韻味互為表裡。籌謀平面時，斟酌住家入口緊扣電梯，於是便將梯廳與門廳鑄合，也因為其獨立式規劃而能起一種類玄關機能，但叩進住家前尚有門禁。

2. 綠色的天花裝置可視為燈具延伸，有波浪意象。3. 此大型空間裝置為塑膠材料編織而成。4. 停車場入口的牆面配有卵形輪廓的裝飾。5. 以簡單線條框架整合立面。6. 大樓接待櫃檯處設計一道植生牆。

2. Green color ceiling motif provides a sign of ocean waving 3. Plastic material woven into an art piece 4. Egg shaped motif decorates the surface of the parking space 5. Simple framework makes the space tranquil 6. Plant climbing wall in reception





7. 獨立式門廳，有玄關作用。8. 以弧牆創造出室內第二層動線。
9. 弧牆本身亦是儲藏櫃。10. 立面和天花線條呼應著建築的有機造型。
7. Lobby view 8. Curved wall creates a spatial layer before one enters the main living room 9. Curved wall provides functional storage 10. Interior exhibits organic shapes

隨之排闥入主屋，則可見弧牆及相應而生廊道界定出第二層動線，需掠過此流線立面才會抵達客餐廳構連出的大平面。躡步遊走這迂迴再入並藏有環繞趣致的動線，抑或小廣場模樣的弧型公共空間，陸希傑將習以成俗室內規劃重造做如此解釋：「普通就是三房兩廳然後一個長長的走廊，於是設計面想用別的方法破除這種關係，同時也藉著第二層動線，讓客廳不要直接面對廁所。」

弧牆留兩個口作為進出的通道，也產生三道牆對應著三個獨立房間、入口隱隱相應臥房門洞的連結性，在摸索環境時能因結構獲得指示。這般一個段落再接一個段落的配置，藉著不全然斷隔亦非徹底穿透的格局變理之法，從而疊出多层次景深，就像每逢佇立在臥室向廊道呵眺，則先房門、再弧牆這一落又一落立面創造出結構前進感。而動線意念上，陸希傑則盡可能疏濬各環節，房門只要別闔上，屋之四隅即是串聯、環繞狀態，輔以圓弧廊道，讓人有股在城中阡陌巷弄間踟躕的閒情。至於一種好似屏風般、不觸頂的牆垣則是另個主軸，天花板下去是空的，亦即牆沒有砌滿到天花，因此牆兩側的光源能因罅隙而相互沁滲，儼如在房子裡再蓋一個房子般三度空間的處理。採訪 劉芝君





11. 天花的弧形好似雕塑。12. 起居室連接著露臺，能臨眺周邊綠意。13. 開放的客餐廳，結構隱隱散發著有機線條趣致。
 11. Curved surface of the ceiling motif 12. Living room and balcony easily access the outdoor greenery 13. Living room view and its visual interest in an organic rhythm

The project is a sales unit facing a large park and has a small inner courtyard at the back. CJ Studio's commission included furnishings and the layout of the lobby space, reception court, elevator court and parking zone. His strategy was to face nature in a more creative way. He said: "the building design started from the concept of eco-friendliness so what I tried to expand was the idea of nature for incorporation into all perspectives including lighting, materiality and a dynamic visual energy in an organic form." The appearance of a giant woven installation represents a wave motion which echoes a curving wall in a dual melody.

Public Space: Organic weaving art

The lobby court's six meter height is ample and spacious and a glance from indoor to outdoor confronts endless greenery. Facing this invincible beauty, CJ found a bamboo art master Mr. Min-Shen Su to weave a huge bamboo work in central axis that faces directly to the Park.

CJ states that he used computer simulations and serious calculations to find the proper organic shape for this art work. Standing right in central position of the lobby, the art piece received spotlight from an oval lighting fixture and against the white paste surface wall. The simple material and color backdrop augments the amazing scale of the bamboo screen and its delicate woven patterns.

CJ was also responsible for the landscaping design from surrounding floor treatment and basement floor. Several curved

fixtures in the basement give the dark space a sense of liquidity. Like waved by invisible energy, the curved screens energizes the space in a vivid spirit.

Sale unit design: layering in space

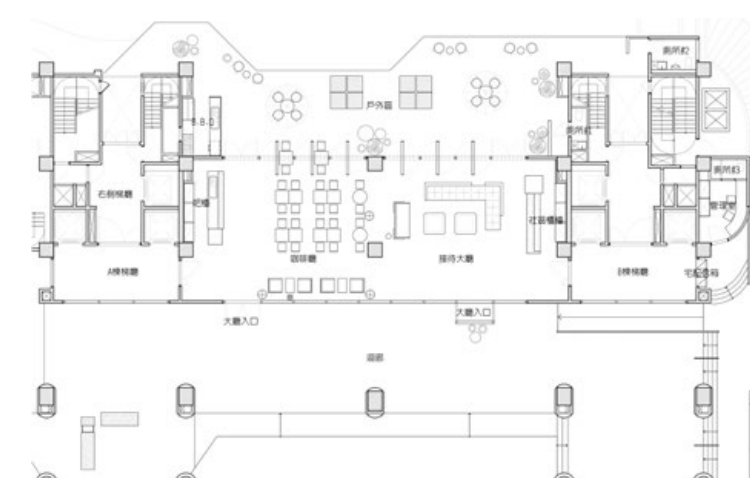
A curved wall embraces the sale unit and divides it visually from the lobby zone. The unit is immediately linked to elevator court which encouraged CJ to offer the unit a special type lobby, which was then divided by two layers. The first starts at the elevator court.

The inner court faces curved wall and pathway leads into the living and dining room. The layered layout increases the visual interest of the interior furnishings and avoids direct views into unwanted space. CJ stated that he tried to loosen up the typical plan for a three-bedroom apartment. This plan creates a double visual layer and sets a new relationship between public and private.

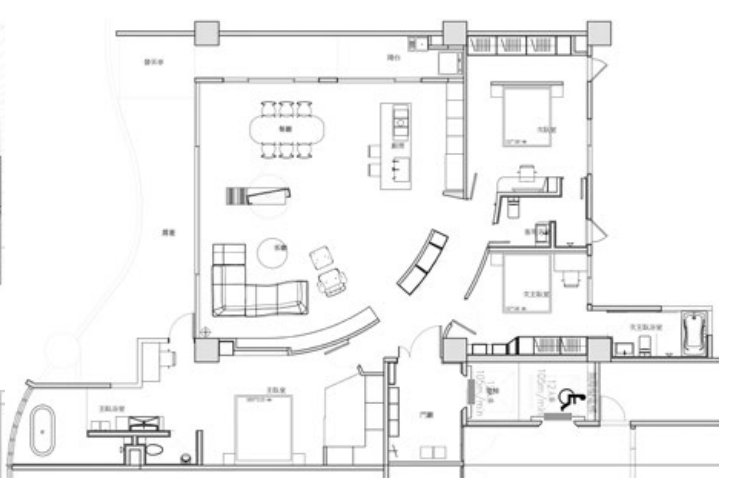
Two openings on the curved wall lead into three private rooms. With a similar tactic, CJ created a spatial sequence rather a single room. The visual impression of the room and the living space is like a micro-city crossed by paths and various blocks. One of the unique feature of the space is that the major partition wall leaves a unsealed opening into the ceiling; light from neighboring room gently slips in and provides a mysterious but intimate comfort.



14. 從弧型廊道瞻看主臥房。15 格局打通，讓床鋪和衛浴依著長平面配置。16. 天花設計讓光源猶如自牆面縫隙漏出。17. 主臥書桌一隅。18. 公設平面圖。19. 實品屋平面圖。
 14. A view from the curved wall pathway towards the bedroom 15. Bedroom layout 16. Light slips out from the cleavages of wall surface 17. Reading corner inside the master bedroom 18. Public zone plan 19. Sales unit plan



18



19



20



21



23

20. 從次主臥向廊道瞻看，一層又一層立面洋溢結構美。21. 次臥和客用衛浴的關係亦是串聯環繞。22. 弧型廊道串連著室內大小空間。23. 水泥質感的床背板與精細裝潢對比。

20. A view from the master bedroom towards the pathway 21. The linkage between the second bedroom and bathroom 22. Curved wall chains the space together 23. Contrasting dialogue between the cement wall and fine furnishing materials

建材分析 Material Analysis

公設：1. 地板為棕櫚灰仿古石材。2. 立面局部用銀狐白大理石點綴。3. 利用菊水工法（SA 工法）製造清水模質感。4. 玻璃窗框為鍍鈦金屬。5. 大廳公共藝術為竹編。6. 停車場的天花裝置為塑膠編織。

實品屋：1. 木地板材質包括橡木與鐵刀木。2. 空間白色材料多為鋼琴烤漆。3. 層架為鐵板噴漆。4. 旋轉電視架的外盒為金屬沖孔。

Public zone：1. Antique feature treatment on the surface of the stone 2. Silver fox marble appears in certain portions of the main partition 3. SA treatment on the surface of the concrete 4. Titanium plated window frame 5. Bamboo art work 6. Woven plastic work appears on the ceiling in parking space

Sale unit：1. Floor is shown in hardwood and oak 2. Piano paint in a shining white color 3. Painted surface metal rack 4. Revolving TV stand and its detail

溝通重點 Communication Note

1. 業主希望用投影的方式在大廳呈現生活訊息，所以在公設中需另有規劃。2. 藉著實品屋讓買屋民眾去捕捉生活此中的感受。3. 業主希望配有休閒氣息的半戶外空間。4. 公設要求咖啡廳與休憩空間。5. 業主喜歡安藤忠雄作品，因此大廳導入類似清水模的語彙。

1. Projection screen needs to be considered in the lobby hall 2. Sample sales unit provides real experience in the space 3. Semi-outdoor leisure space 4. In the lobby a reserved space for cafe and leisure relaxation 5. Exposed concrete reflects a passionate love for Ando's works