

# 輕 · 親 Gentle Intimacy

設計者 | M. Design @ 石坊空間設計研究 / 郭宗翰  
參與設計 | 陳婷亮  
攝影者 | Kyle Yu  
空間性質 | 住宅空間  
空間地點 | 天母  
室內面積 | 40坪  
使用建材 | 石材、風化木、烤漆、鐵件、玻璃、特殊磚  
設計時間 | 2009年12月至2010年2月  
完成時間 | 2010年2月至2010年5月

Designer | M. Design @ Stephan Kuo  
Participant | T. L. Chen  
Photographer | residence  
Location | Tienmu, Taipei  
Size | 132m2  
Materials | stone, weathering wood, painted steel, steel member, glass, and special brick  
Design period | December 2009 - February 2010  
Construction period | February - May 2010

總是隨著家庭成員的增加，推動著生活空間的各種展變，對理想與現實之間取得平衡的想望，更需要透過體貼以及全面性的設想。這座位於都會的居家，現階段家中有三個年幼的孩童，年輕的屋主夫婦期望能透過設計規劃，創造出親子互動密切的居家，在分享孩子成長的過程中也能保有生活空間的自由度。設計師從互動、實用、美感等不同層面進行考量，將年輕夫婦對家庭的期望注入空間，創造親密親子情感與生活品質並重的居家文本。

Following the growth in number of family members, a family will encounter insufficient space and hope interior design can offer alternatives that help us cope with difficulties. This family is a couple and their three young kids and they hope their home will be a sound space that weaves an intimate feeling among the members, and where kids can happily grow up. Stephan proposes three main themes in this design: good interaction, pragmatic acceptance and artistic delight are to be accomplished.

1. 設置一道照壁框塑玄關場域並扮演客廳背景，避免自外部梯廳即能一眼望盡居家內部的尷尬。2. 客廳大理石牆以其相似水墨畫作的自然圖騰以及色澤反差效果，作為客廳背景。

1. A screen sectors the public and private spaces to avoid direct visual contact to the bedroom quarter 2. Marble wall reveals a pattern similar to a Chinese ink painting, a perfect backdrop for the living room







### 設計概念

本案為一層一戶的大廈住宅，考量屋主對於私密空間需求較大，拆除原有瑣碎隔間，將空間切割為公私場域，左側整併成一座開放式的L型腹地，編設玄關、客廳、餐廳、中島廚房，右側方整的長型空間屬於臥房區，規劃主臥套房、小孩房。

考量居室內部隱私，設置一道懸空型玄關場域並扮演客廳背景，讓迂迴性的動線作為回家轉換心境的洗塵步道，也能避免自外部梯廳即能一眼望盡居家內部的尷尬。將主要採光面編配廳區與主臥房，客、餐廳之間以一道長向窗台串接，在窗台具有置物、多功能扶台的使用可能，在隱身其中的燈帶輔襯下勾勒出景深趣味性。大開窗以及內部廳區的通透性，讓採光能夠在居室中流動，補足中段空間採光較弱境況。

刻意強調既有樑位，藉以在開放空間裡低敏的示意場域範疇。使用木皮包覆樑身，突顯空間結構即裝飾的概念，與室內大量使用的木質家具形成呼應，藉著天然木紋的質感與肌理，突顯出居家溫暖本質。

由於女主人為專職主婦，平日在家照顧三個幼小孩童，設計師將照顧孩童的日常動作納入規劃中。將臥房區、餐廳空間的主動線串連，並讓備人房鄰接中島型廚房，方便協助女主人處理孩童的睡寢餐食。使用兩張餐桌拼接成一座大長桌，讓女主人可在餐廳空間活動時，能即時關照三個孩子的動態，滿足同時餵食、伴讀的需求。

此外，本案強調活化空間機能，特意保有高度的開放性，讓開闊腹地作為親子遊戲互動的場域，大量使用活動家具，居家能隨著孩童的成長階段進行內部微變，調整出最合乎當下需求的空間型態。同時，家具的活動性、寬裕動線以及非完全平滑的地坪材質，都為親子的居家活動給予了溫柔體貼的設想。

3. 大開窗以及內部廳區的通透性，讓採光能夠在居室中流動。  
3. Big windows allow natural light to come in





4

4. 選用能方便移動與組搭的家具單品，居家能隨著孩童的成長階段進行內部微變，調整出最合乎當下需求的空間型態。5. 使用兩張餐桌拼接成一座大長桌，讓女主人在餐廚空間活動時，能即時關照三個孩子的活動情況。



5

4. Movable furniture pieces offer possible options for the space when it's necessary 5. Big dining table offers the wife the best convenience for taking care of the young children

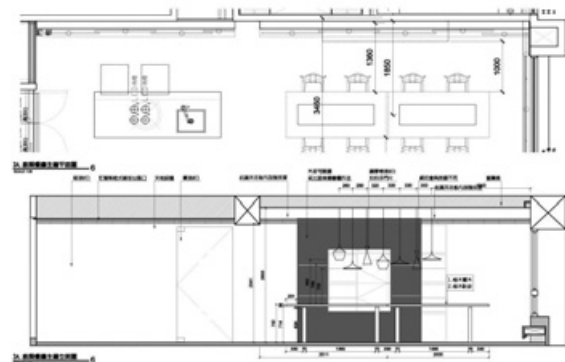
### Design Concept

The project is for an apartment unit; the owner wishes that privacy would be fully maintained and most of its spaces would be designated for living rather than the public zone. There are two parts in this unit; the longer portion of an L-shaped plan is deployed for bedroom space, the other is for the public. In the living room there stands a screen at a position that transitions to the private zone; this screen sets a precise border between private and public and avoids visual penetration into the private zone. Natural light can enter from the living room and master bedroom. A long extruding window frame can be used as flower pot holder. In the evening when the lighting is on, lighting from the outside lights up a band outside of windows and then expands the spatial depth. Big windows in the living room and undivided public space allow natural light to permeate within and compensates for the insufficient lighting in the deep position.

Existing beams are not invisible behind the ceiling but rather they are deliberately covered by a veneer to mark the hierarchy of the structural force; the wood surface maintains a dialogue with the furniture pieces mostly tailored by wood, to reveal a warm home-living ambience.

Being a full-time house-wife, the wife has the most direct concern of how the space works. The layout links the maid's room, children's rooms and kitchen together to offer the best convenience for the wife. In the dining space there are two tables that can be combined into a big one; she can use this table to take care of the children's meals while doing other things.

Space in this apartment is quite flexible and can be changed accordingly with movable furniture pieces making way for playing ground. It is expected that the space can be modified when the kids grew up. The designer's consideration are easily detected on this house design; high-friction material are used for floor materials to avoid slips is one of the examples that shows his efforts.



廚房餐廳主牆立面圖。  
Main partition elevation, kitchen and dining room

### 建材分析

**義大利白石材：**以其相似水墨畫作的自然圖騰以及色澤反差效果，作為客廳背景。石材本身能隨著歲月累積展呈時間沉積的變化，成為書寫居家時空元素的介面。

**義大利古磚：**在素簡空間黑、白、灰作為基調，地坪鋪設義大利古磚，特殊窯燒表面呈現出不可預期的凹凸紋理，與空間的木質元素構成自然有機的況味。

**橡木實木木皮：**藉由橡木山形之深刻肌理，以不同向度拼接以強化木皮更原生的質感。

**鋼琴烤漆：**在櫃體與桌面鋪以鋼琴烤漆，其鏡面反射效果，能將屋外光線與街景投射於飽和亮澤的表面上，創造空間虛實對照的視覺層次。

**毛玻璃：**半透視的材質藉以光線折射，產生若隱若現的視覺趣味。

### Materials

**Italian white marble:** the material shows a natural segmental layering on the surface like a Chinese ink painting. The color and natural strokes are said to have changed when time passed by

**Italian antique tiles:** the tiles shows a natural pattern and uneven undulating surface; it is a perfect match to the black/white/gray color marble background and wood furniture.

**Oak veneer and solid oak wood:** this wood veneer has a herring-bone pattern and are joined by a careful study of detail

**Piano-paint surface treatment;** this surface treatment can reflect interior lighting and street views, thus creating a layering of surface depth.

**Foggy glass:** this opaque material deflects light to create visual illusion and ambiguity

### 溝通重點

1. 公、私場域的大區塊配置位置：以與採光方向垂直向度劃分，藉以讓每個區域的光線均勻流動。

2. 屋主希望空間氛圍能以較深色的材質鋪陳，但又顧慮日照光線的明亮度。建議以黑白對比以及材質反差處理氛圍層次，在平面上多以深色材質呈現，立面則使用不同肌理但具有較強烈反射效果的淨白材質，藉由反差對比的手法，形塑沉穩的空間氛圍，並保有居室的明亮感。

3. 屋主在軟裝搭配上，希望採用設計感且具品牌形象的單品，但是另一方面擔心幼童會破壞這些設計家具。建議以活動性、設計感、耐用度等三大主重點作為家具選擇的考量；以沙發與餐椅為例，在可融入空間調性的基礎下，找尋表面材質較耐用或結構強度較高，且能方便移動性與任意組搭的單品，讓沙發量體能融入空間中，並且能視當下空間需求調配擺放位置。

### Communication Notes

1. Careful deployment of private and public space offers the best daytime lighting quality

2. Even initial communication reveals the client's hope for having a deep color interior yet an insufficient lighting zone was not possible to accept this suggestion. The final solution is geared to a black-and-white color and uses richer textures to gain spatial layering. The contrasting color between light and dark offers a solemn air in the living room while energetic under light.

3. Clients loves brand-name designer's furniture pieces yet were afraid that the young children would damage the expensive pieces. The designer's recommendation was to select movable, durable pieces yet are products coming from the main design house. Sofa and dining chairs were selected under these principles.





6. 將臥房區、餐廚空間的主動線串連，方便協助女主人照顧孩童。7. 規劃中島廚房，賦予廚房多功能的使用可能。8. 地坪鋪設義大利古磚，特殊窯燒表面呈現出不可預期的凹凸紋理，與空間的木質元素構成自然有機的沉味。9. 使用木皮包覆樑身，突顯空間結構即裝飾的概念，藉著天然木紋的質感與肌理，突顯出居家溫暖本質。  
 6. Relationship between the bedroom quarter and kitchen is a reasonable choice for taking care of the children 7. Island style kitchen is more flexible to use 8. Italian tiles used on the floor shows unique natural pattern and texture 9. Veneer wrapped on the beams emphasizes the spatial forces and gives a warm temperature to the room

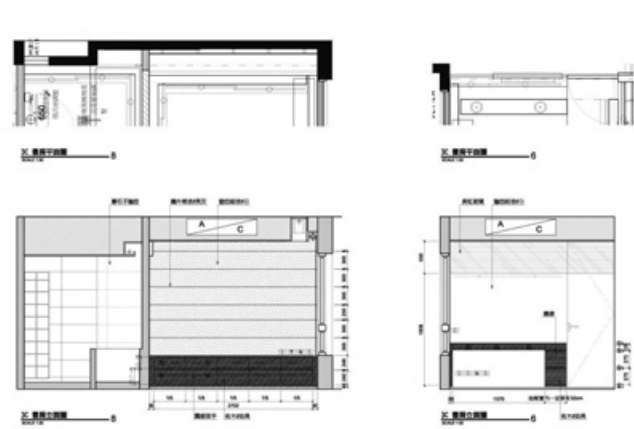




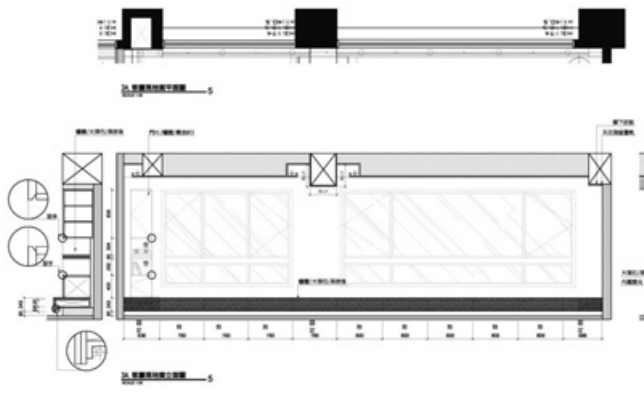


10

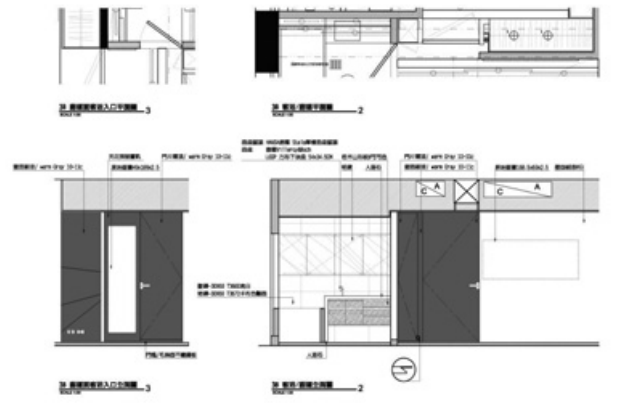
10.11. 主臥房。12. 浴室。13. 小孩房。  
10.11. A master bedroom view 13. Bathroom 13. Kid's room



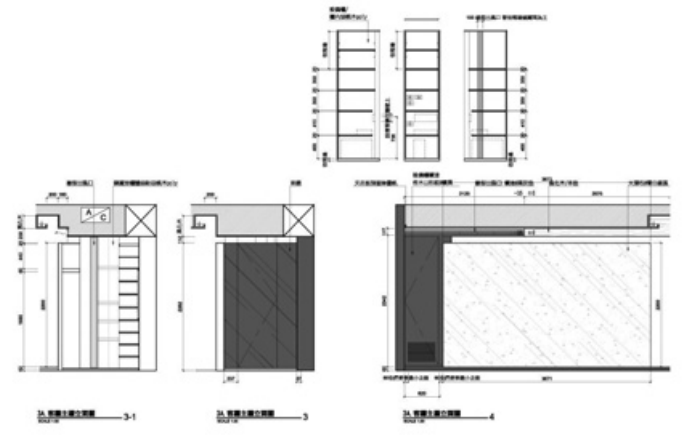
書房立面圖。One elevation of the reading room



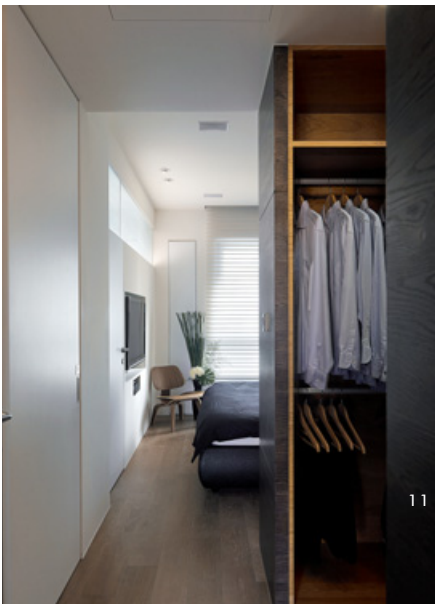
客廳落地窗立面圖。Window side elevation, living room



客浴廊道立面圖。Gallery elevation



客廳主牆立面圖。Main partition elevation, living room



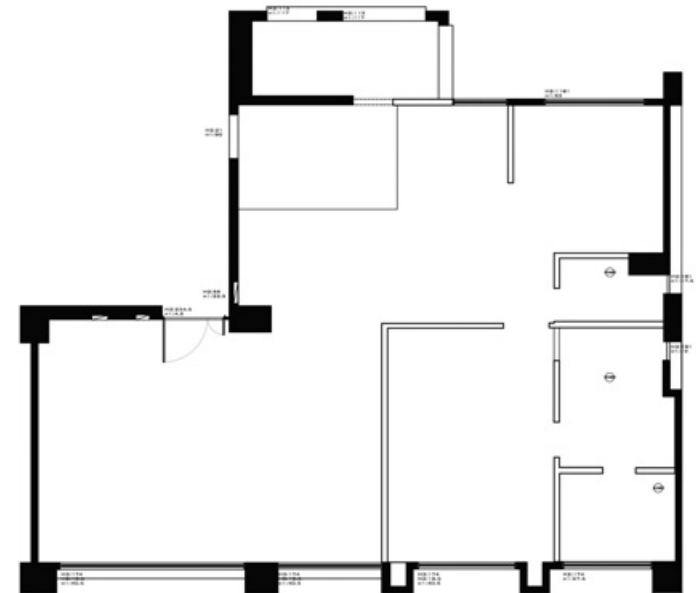
11



12



13



現況圖。Existing plan



平面圖。Plan