

# Cloud Wings

## 雲翼

設計者「雲邑設計／李中霖」  
參與設計「林琬玲」  
攝影者「李國民」  
空間性質「住宅」  
坐落位置「臺北市」  
主要材料「夾板、鑲銅磚、臺灣檜木回收板」  
面積「48坪（夾層13.5坪）」  
設計時間「2010年12月至2011年1月」  
施工時間「2011年1月至7月」

Designer「Yun-Yi Design / C. L. Lee」  
Participant「W. L. Lin」  
Photographer「K. M. Lee」  
Category「residence」  
Location「Taipei」  
Materials「plywood, rustic copper brick, recycled Chinese Juniper board」  
Size「48 ping (mezzanine level: 13.5 ping)」  
Design period「December 2010 - January 2011」  
Construction period「January - July 2011」

或許我們對生活都過於實際，連在自宅做夢的能力也漸漸淡去。在這座住宅裡，設計師以感官牽動思考，運用現有環境大膽的落實想像，透過一片雲翼，改變了我們認識空間的角度，引領居住者超越既有的想像，實踐內心期望的生活方式。採訪「劉憲蘋」

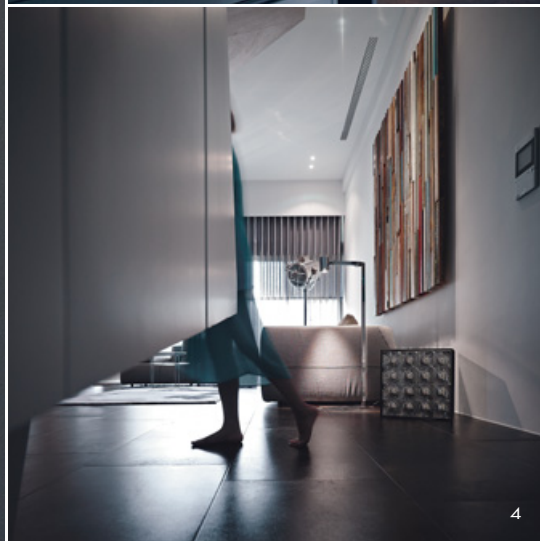
Nowadays people are afraid of having dreams because there is nothing we can dream of. We are surrounded by all sorts of problems, be they social, economic, and even personal crisis. Yet home is still the final place we can shelter. It is a place drilled into our heart where we wonder about the future and think about something that is not feasible at the current time.

1. 懸浮的雲翼裝置，在燈光映照下烘托出豐富紋理，帶引觀者隨著騰動線條展開想像。

1. Levitating "cloud wings" and its enchanting profile is back-lit

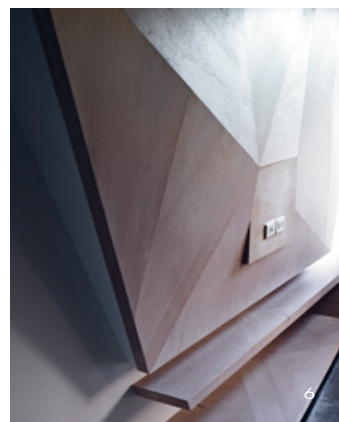






2. 有別於天花板與立面的幾何造型，地面選擇沉穩色調，為空間塑造寧靜且安穩的氣息。3. 精算幾何物體的比例與關係，建立豐富的視域層次。4. 地面使用鋪銅磚，仿舊的復古紋路，為前衛空間注入些許樸實元素。5. 採用工業時期風格的復古燈具，與摩登空間產生趣味對話。6. 藉由夾板自身的樸實特色，平衡前衛的幾何造型。  
 2. Harmonious dialogue between ceiling and floor 3. Good proportional layout in the geometrical pattern 4. Rustic copper brick provides a sense of nostalgia while adding a dialogue of modern ambience 5. Antique lighting fixtures and their surroundings 6. Interesting layout of the geometrical pattern

## 設計概念



全案設計啟發來自於「翱翔」。如同每次旅程的起降，隨著穿越雲端的過程，層層褪去心靈雜噪，裸呈最清明的思緒般，設計師為這個家摺入了一片雲翼，大膽擁抱那份清新感受。透過這座懸浮裝置，讓空間思考擺脫了現實的束縛，換上無限的想像與詩意。

隨著這片雲翼，衍生出全案豐富的幾何語彙。設計師將幾何造型融入於天花板、櫃門，利用大量的留白與鏤空透視，並以暖色的間接光源渲染其層次，為這些造型前衛的量體覆上淡淡的溫度。同時，精算天花板、立面等幾何造型的比例與對應，透過不同視角衍生出框景效果，讓造型彼此之間產生了或對稱、或反差的關係，亦為空間建立了豐富的視域層次。

設計師透過沉穩氛圍平衡強烈的幾何語彙，運用時光、紋理、無色系等元素貫穿全案。空間挑高四米，地面鋪設鋪銅磚，仿舊的復古紋路與沉穩色調，為這個家鋪陳了略帶樸實氣息的底色。廳區特意選配造型低矮的家具，背離地心引力的雲翼與沙發低矮的姿態，兩者構成微妙而舒適的觀賞距離。此外，選用回收板材拼組成造型裝飾，與客廳的現代家具形成對比，藉由當代元素與舊時物件的相輔相成，為空間經營了跨時代的場景故事。

若說公共廳區是家人共同嬉遊的聚點，私人領域則是每位居住者徹底實踐真我的樂園。設計師為臥房區留下寬廊，讓公私領域的切換帶擁有舒適的過渡空間，而每間小孩房內部均規劃夾層，讓上層與下層分別負起睡眠、書房與小廳等功能，提供使用者能全然享受空間分配的自主性，實踐個人對於生活起居的種種理想。

## Design Concept

The concept of the design starts from "flying". It can be imagined as a journey that only starts when a plane takes off from the ground. As a body flies over the thick clouds and its eyes look down upon the earth, the mind becomes clear and seemingly not restricted by any reality. This home is like a place equipped with a certain mechanism that erases gravity and allows people to submerge themselves into his fantasy and imagination.

The "cloud" is a language of geometry; geometrical pattern appear on the ceiling and its embroiled formation is like patches of clouds in the sky. Light tints the border like a sunset pastel color dye on the edges of white clouds. This cloud ceiling is tailored in different pieces and in the careful layout of shapes and geometrical patterns. The layering depth of the "clouds" is as if there were real clouds hovering over one's heads.

Against the organic pattern on top, the floor exhibits an opposite texture in rustic copper bricks. The antique brick surface reduces the color tone of the space and tints it with a classic language. Furniture pieces that appear in the living room are custom tailored with a low sitting height. The low sitting position increases the distance from one's eyes to the ceiling, thus enhancing the mutual dialogue between floor and ceiling.

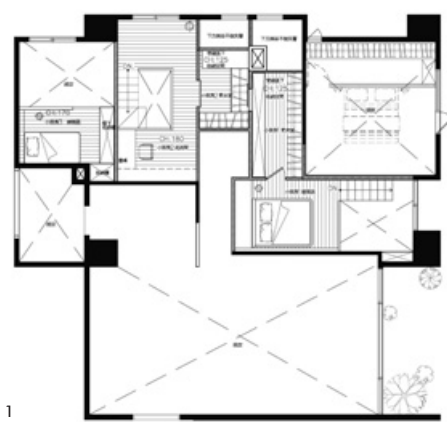
Recycled wood boards are an interesting material observable in the living room; at first sight they mark a tense conflict with the high fashion ceiling and furniture pieces yet they gradually mix into the space and build a harmonious dialogue.

It is the most private zone - the bedroom, which gives this residence its most personal realized identify. Each room is not just separated from the public space by the thin layer of a door but rather is a transitional space as well. The kid's room has a distinctive feature that truly reveals the people who dwell here. The kid's room has a mezzanine level; the upper is a sleeping space while the lower is for daily activity.





11



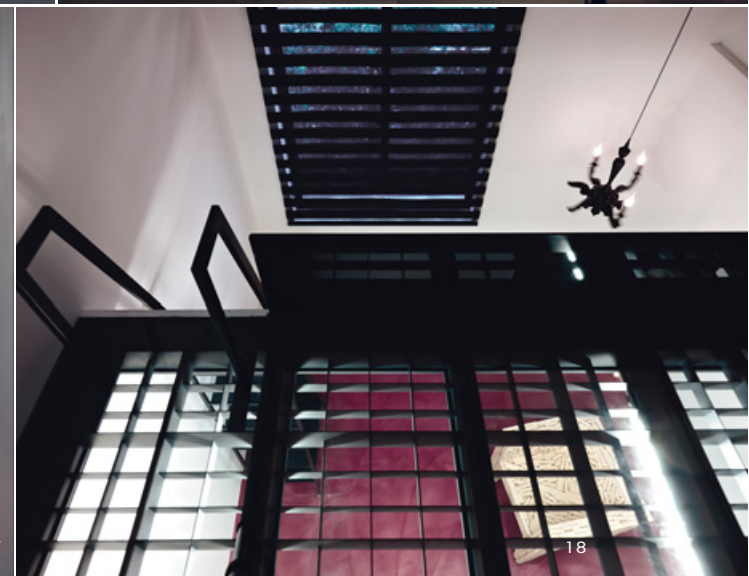
12

7. 餐廳的櫃牆與廚房天花板延續幾何語彙，在暖色光源的渲染下，覆上淡淡的溫度。8. 開放式廳區，隨著立面與天花板的造型線條，構成別致的框景效果。9. 在摩登現代的場景中，選用回收板材拼組成造型裝飾，藉由當代元素與舊時物件的相輔相成，經營跨時代的場景故事。10. 使用灰階與黑白對比等色調釀構沉穩氛圍。11. 平面圖。12. 夾層平面圖。13. 造型量體的開口，也是指引著動線方向的暗語。

7. Kitchen's cabinets form a continuous layering to the ceiling 8. Open style living room and its ceiling formation 9. Recycling wood boards create a dialogue with one's memory of the past 10. Gray color and black-and-white color in the space 11. plan 12. Mezzanine Plan 13. A vista that leads through an opening







14. 廊道。15.16. 臥房。規劃夾層，讓使用者有充裕的私人空間，依隨個人需求分配場域功能。17.18. 臥房。夾層使用格柵與玻璃，透過擬仿工業時期的建築語彙，強調空間的結構美。  
14. Pathway 15.16. Bedroom in mezzanine level layout 17.18. Bedroom and detailed designs in the glass and metal grating details

#### 建材分析

全案採用中性色系，大量使用灰階與黑白對比，為空間鋪陳沉穩底色。特別強調材質的質感，運用燈光烘托夾板、鏤銅地磚的特色紋理與光澤。使用回收板材、工業時期的復古燈具、夾層格柵，表達空間故事性。

#### Material Analysis

This apartment uses a fair amount of gray color material; black-and-white gives the space a sense of tranquility. Texture is rich in this apartment. Lighting augments the beauty of the texture-rich materials such as the rustic copper brick on the floor.

#### 溝通重點

藉由摩登感與歷史性等元素的交互搭配，為空間調配豐富的層次感。為臥房區留下寬廊，讓公私領域的切換帶擁有舒適的過渡空間。小孩房擁有夾層，提供使用者全然享受空間分配的自主性。

#### Communication Note

The mingled style of both fashion and classical provides a sense of layering in the space. For enhanced privacy the bedroom implemented a transitional zone. The children's room has a mezzanine levels that opens up the lower space for daily activity.

