

# Gray Diamond Stone

## 灰鑽石

設計者「雲邑設計」/ 李中霖  
攝影者「李國民」  
空間性質「電梯大廈」  
坐落位置「台北市」  
主要材料「水泥、玻璃、清水模、鑄多魔、不鏽鋼」  
面積「45坪」  
設計時間「2011年1月至2月」  
施工時間「2011年3月至9月」

Designer「Yun-Yi Design / C. L. Lee」  
Photographer「K. M. Lee」  
Category「apartment」  
Location「Taipei」  
Material「cement, glass, exposed concrete, Pandomo, stainless」  
Size「149m<sup>2</sup>」  
Design period「Jan. - Feb. 2011」  
Construction period「Mar. - Sept. 2011」

雲邑室內設計/李中霖

中華民國室內設計協會理事  
雲邑室內設計有限公司 總監  
2001 成立雲邑室內設計有限公司  
1999 創立雲邑室內設計工作室  
1993 復興美工畢業

Yun-Yi Design / Chun-Lin Lee

Board Director, CSID  
Director, Yun-Yi Design Inc.  
2001 establishment of Yun-Yi Design Inc.  
1999 establishment of Yun-Yi Artier  
1993 graduated from Fu-Hsin Trade and Arts School



凝望鑽石切工所折射的綺麗光彩，宛若萬花鏡般令人神迷。請試著想像，當你步入鑽石之中，觸目所及將會是怎樣的視景？在這座都會居家，設計師嘗試將鑽石層層折射所構築的虛空間捕捉至現實世界裡，運用切面與折射線勾勒出綺麗風景，在灰色淡妝的手法下，描述了都會雅痞的品味個性。採訪「劉蕙蘋」

A good diamond cutting brings a glaring beauty to the precious stone. What if a scene could be imaged when one walks inside a diamond and sees unimagined kaleidoscopic glamour and fantasy. This apartment is based on this fantasy and shows the desire and elegant taste that a city dweller is always long looking for.

1. 廳區櫃體的潑墨洞口帶引人從不同角度看望居室風景。2. 暖色燈源增添了空間的溫度，將立面表情刷染的更為溫和。

1. A vista window and its cast view 2. Warm lighting adds temperature to the space





## 設計概念

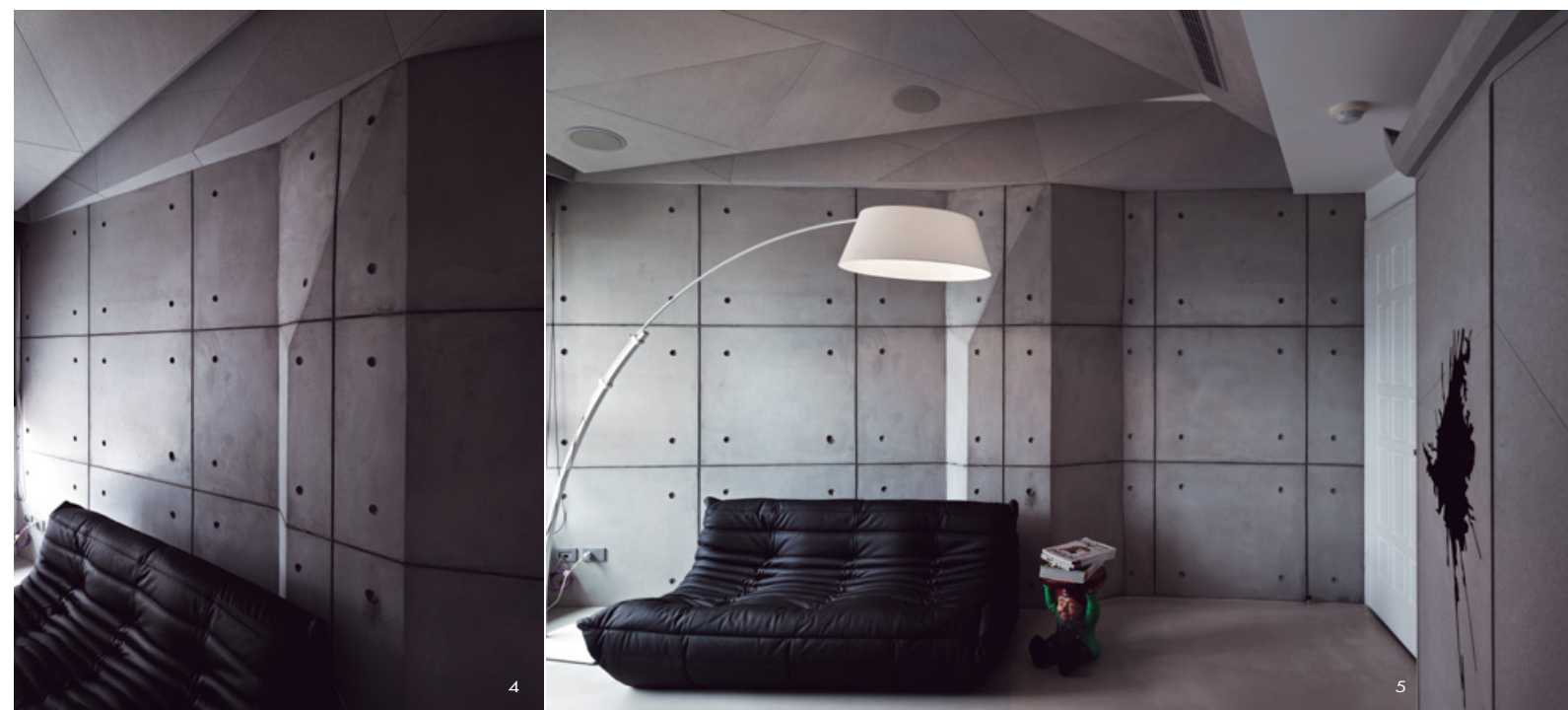
屋主為單身型男，講究生活品質與美感，喜歡結構性的視覺語彙以及灰色調。設計師以灰鑽石作為靈感，將鑽石觸及光線所產生的折射概念移植至空間，透過這些豐富的結構線條捕捉光影變化，交集時光與空間。

結晶般的立體造型主要分布於客廳、餐廳、廚區、複合大房的立面，造型量體的厚度消化了必要的機能設施，折射線條亦延伸至天花板，圍塑成一種半包覆性的感受，讓居住者遊走其中，宛若穿梭於一層又一層的折射場景裡。特別的是，設計師並非將居住者置於單調的切割脈絡裡，全案除了特意扭曲折射線的對稱規律，也透過切面的起伏變化與受光角度，讓觀者能隨著步伐動態不斷的重塑風景，空間亦使用大量的玻璃質材界定場域，創造場域交錯的透視或倒影效果，融合成一幕幕令人細味的過場風景。

「光線」是全案的一大特色，設計師使用大量的灰色調賦予造型安靜的個性，讓不同層次的灰色質材柔化線條的銳利感。當採光透進室內時，空間裡的清水模、水泥面、鑄多魔以及反射、霧面等元素，會隨著受光角度回饋出豐富的層次感，突顯出空間裡不均質切割表情，灰色調亦能調配出更柔和的光影質感，隨著時光柔和的變化室內氛圍。而全案一致性的暖色燈源為造型量體的線條與層次刷染上溫度，與自然光影一同為空間凝聚出生動表情。

設計師透過古典元素為本案揉入了優美韻味，廳區櫃體的潑墨洞口帶引人從不同角度看望居室風景，餐廳吊掛的蠟燭燈、主臥房立面大量的藝術線板，空間局部佐以高彩度的設計家具或燈飾，無不促使全案在古典與前衛的交集下，創造出跨時空的奇幻風景。

3. 利用鏤空、留白與透明材質經營層層透視的美感。4. 客廳細部。5. 使用豐富的灰色層次，淡化造型切割線的銳利感。6. 使用玻璃質材界定空間，創造場域交錯的透視或倒影效果。7. 多功能房細部。  
3. Holly-up treatment and transparent material creates an ambience of liquidity 4. Details, living room 5. Gray color significantly reduces the contrast of light 6. Glass is used to keep reflections off of the surroundings 7. Details, multiple function room





8

8. 多功能房，可作為客臥或書房。9. 特意扭曲折射線的對稱規律，透過切面的起伏經營多變表情。  
8. Multi function room can be altered into a guest room or reading room 9. Twisted surface and folding panels give an undulating rhythm to the space

### Design Concept

The client is a bachelor with great taste and a sense of beauty. He likes the gray color and enjoys a space with systematic order. "Diamond" in its shape therefore metaphor was chosen as a graphic icon as a language to unwrap the space; it was developed as a structural order that intends to grasp the natural light and radiate the light into the space.

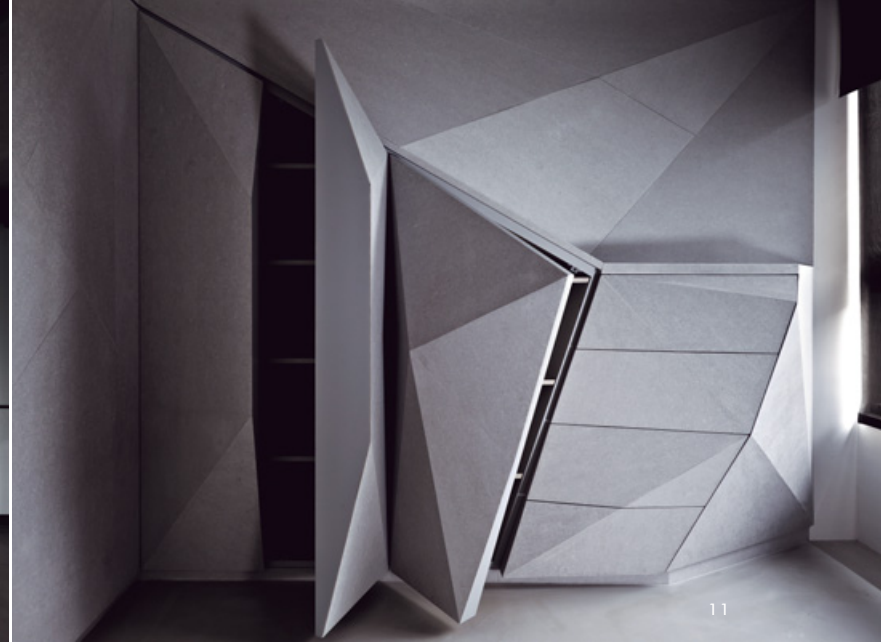
The crystal pattern is most unique in the space and it wraps most parts of the open space and even grows from the partitions to the ceiling. The facet of the folding structure gives the dweller an everlasting scene of transient light and views. Yet the facet pattern is not fixed in one type, scale or rhythm, rather it is tailored by a careful study for accepting proper light and its reflections. Glass is used extensively and it gives the space a spatial quality with ever changing experiences.

"Lighting" is a crucial element in this apartment. Because only one color, gray was used in the public space and light is not disturbed by other colors. When the natural light is cast on the exposed concrete, the cement brush and gray color Pandomo the light reflects sensibly. The surface is like a mediator that sometimes filter out and then sometimes enriches the brightness or darkness of the light. When the artificial light is illuminated at night, a mystic layer of the lighting appears.

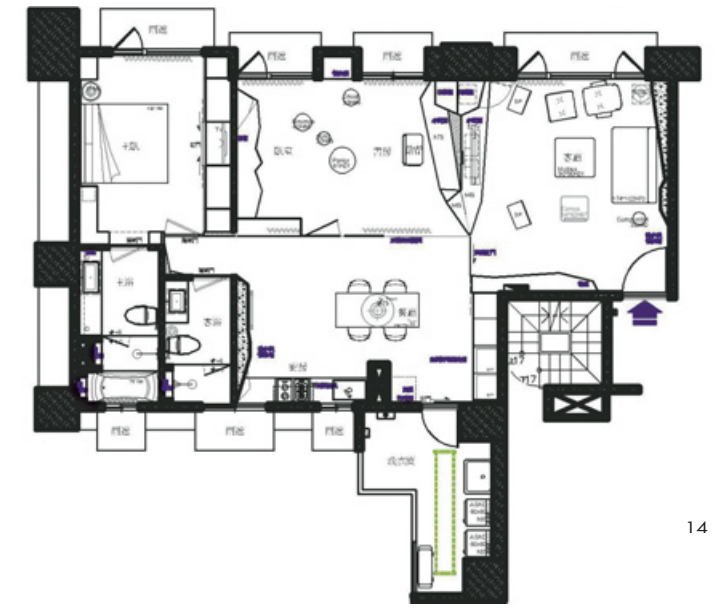
The motif was derived from classical elements such as vista view window and classic details in the living room provide a sensible dialogue with the modern element. Other mediating corporation between the modern and classical appears in many scenes; dining space and its candle lamp, classical motif in bedroom are the most interest joins in language contrast.



9



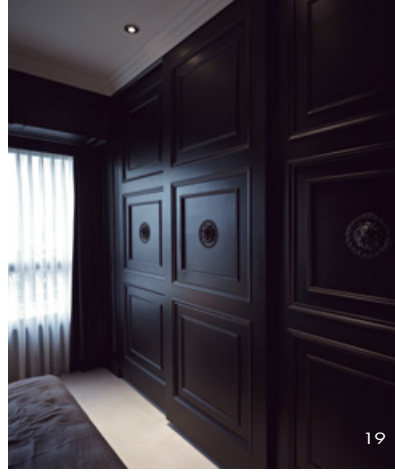
10. 層層框景的手法，讓觀者能隨著步伐移動不斷的重塑風景。11. 利用造型量體的厚度消化收納機能。12. 多功能房可彈性與客、餐廳串連成完整的活動腹地。13. 造型切面隨著受光角度回應出豐富的層次變化。14. 平面圖。  
10. Framed window view from living room 11. Solid body reduces fragmented visual impression 12. Multiple use room is linked directly to living and dining room 13. Rich angles give the space a sensible dialogue to its dweller 14. Plan





15. 利用灰色調反饋出柔和的光影質感，並突顯出不均質切割表情。16. 選擇蠟燭吊燈、高彩度的設計家具對比出跨時空風格。17. 採用不鏽鋼廚具與灰色背景呼應。18. 切割造型延伸至廚區立面。  
16. Gray color and its mediating role responding to the material 16. Contrast of spatial style: candle lamp dialogues with the modern furniture 17. Stainless kitchenware matches well with the gray color background 18. Facet surface extends into the kitchen space





19



20

19. 主臥房細部。20. 客用衛浴。21. 在黑色調的主臥房中，使用大量的藝術線板勾勒立面。  
22. 主臥房衛浴。  
19. Details, master bedroom 20. Guest bathroom 21. Master bedroom and its classical motif 22. Master bathroom

### 建材分析

使用水泥電視櫃、檯面，矽酸鈣板天花板，蟬多魔地坪，加上低彩度的灰色漆料，淡化切割繁複的銳利感，表現豐富的灰色調與光影層次。

### 溝通重點

1. 本案使用人口單純，建議簡化格局，僅保留一主臥套房及一座複合式的開放式大房。
2. 在現代空間裡，選擇蠟燭吊燈、線板等古典元素對比出跨時空風格。

### Material Analysis

GRC tailored TV cabinet; Silicate board ceiling, Pandomo floor treatment; gray color painted partition surface. Gray color is applied by all material.

### Communication Note

1. The program of this apartment is simple; it offers living space and bedroom for a bachelor to live in
2. A contrary of style and material is suggested. Old fashion furnishing pieces wish to join harmoniously with modern industry material.



21



22