

Reading Life

閱讀生活

設計者 | 齊物設計 / 甘泰來
參與設計 | 張芃欣、林芳如
攝影者 | 盧震宇
空間地點 | 台北市
室內面積 | 60.24坪
使用建材 | 橡木染白木地板、橡木直紋木皮、黑色亮面烤漆、銀白龍石材、茶玻璃、墨鏡、黑鐵烤漆
設計時間 | 2010年1月至2月
完成時間 | 2010年5月

Participants | archinexus / Tai Lai Kan
Participants | F. R. Lin, C. Y. Kao, P.S. Chen
Photographer | C. Y. Lu
Location | Taipei
Size | 200m²
Materials | dyed white oak wood floor, vertical pattern oak veneer, shining black paint, silver white stone, tea-color glass, black mirror, black steel painted on the surface
Design period | January - February 2010
Construction period | May 2010

設計師以現代人文精神作為出發點，呼應校區環境以及居住者書香傳家的風格。全案在低斂沉穩的手法下，實踐了崇尚精神豐美的觀點，也讓種種關於生活美學的詮釋，都回歸到文化價值裡。

設計概念

在三房兩廳的前提下，刻意模糊各座廳區的分界，透過動線簡練的手法，縮減廊道衍生的可能，同時廳區亦在視感疊合的共生關係中重構了彼此的尺度。

全案整體設計，幾乎是環繞著閱讀而開展。考量居住者的閱讀習慣，以書桌界定出開放式閱讀區，後方的書架牆規劃燈帶構成線性的秩序感，讓光影襯托羅列其中的書籍，書架局部植入橫長鏡面，在鏡象與實象的穿插裡，成為廳區焦點。

客廳家具儘可能的壓低，讓L型沙發、茶几更貼近地面，表達悠閒無拘的開闊感，設計師將這裡視作閱讀空間的延展，為廳區的落地玻璃窗配上淡灰紗簾，植栽與採光透過紗簾篩入室內，成了詩意的翦影。餐廳在型式簡練的脈絡下，突顯出材質自身的內涵，餐桌使用整片的銀白龍石材桌面，牆面則裝置一幅幾何造型的布畫，兩者在自然與手作的對照下產生了趣味性。

在臥房部份，主臥房運用L型長檯連結閱讀坐區與電視櫃，長輩房與小孩房均規劃了閱讀空間，滿足居住者親近書籍的基本需求。

全案透過大地色系釀構溫暖的味道，並以石材、鏡面、亮色織品、間接燈光等元素跳脫沉穩嚴肅的框架，透過書櫃、閱讀角落的安排，在設計上轉述了屋主重視閱讀的訊息，凝練出雅緻的人文氛圍。採訪 | 劉蕙蘋

建材分析

以大地色系材料為主，呈現整體空間舒適並兼具人文氣質的特色，再透過局部的銀白龍石材、茶鏡、黑色鋼烤等相對奢華性素材作點綴，型塑出結合人文與都會時尚的人文風格居家。

溝通重點

聚焦於營造兼具功能與舒適，並具有人文及時尚感的居住空間。一方面善加利用空間擁有樓高三米六的特色，在房間高處皆暗藏許多收納規劃。另一方面，從空間本身到家具、家飾，透過材料及色彩的搭配，來達成氛圍與風格上的企圖。



1. 刻意模糊各座廳區的分界，透過動線簡練的手法，縮減廊道衍生的可能。
1. Ambiguous borders among spaces and pathway were completely relinquished



2. 以大地色系材料為主，呈現整體空間舒適感與人文氛圍。
2. Earth colors dominate the interior mood



This design tells a story about a literati who loves books and enjoy reading. In this residence, there is no fantasy color but rich texture proclaiming the family's tradition and its deep roots in cultural veins.

Design Concept

Even though there is the typical layout like "three bedrooms + two public rooms", this apartment is anything but typical. What have been reduced are the pathways and concrete partitions between rooms. Visual penetration through proper material adds up to a layering of space creating an air of amplexness.

The concept of the design anchors on the idea of reading. A central focus table dominates the room with a backdrop of bookshelves in a long vertical system. The bookshelves are backlit and mingle with mirror panels that further increase the visual depth. All furniture pieces are low scale; the L-shaped sofa and tea table almost touch the ground. This arrangement increases

visual penetration until the view ends in a continuous silk screen. Changing shadows cast on the screen are like silhouette images in a mysterious mood.

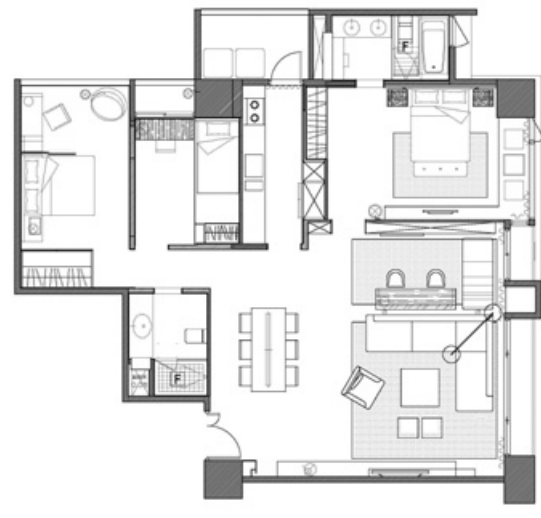
The dining space is particularly full of imagination. A silver white stone dining table confronts an abstract painting in geometrical composition; the visual scene posits an interesting dialogue of both harmony and contrast.

Bedrooms are all equipped with independent reading zones; in the master bedroom there is a tailored design sitting place for reading linked to a TV cabinet. The parent's room and child's room have similar layouts and are full of bookshelves.

The residence applies mostly earthy color tones so as to coordinate the selection of materials and lighting quality. Even the neat detail design proclaims a sound living quality for the family; it is the idea of reading that dominates the space and its family life.

3. 植栽與採光透過紗簾篩入空間中，成了詩意的剪影。4. 書架牆規劃燈帶構成線性的秩序感，以書架作為主牆的手法，轉述屋主重視閱讀的特色。5. 書架局部植入橫長鏡面，在鏡象與實象的穿插裡，成為廳區焦點。6. 用書桌界定出開放式閱讀區，緊密閱讀與廳區的關係。
 3. Silhouette impression on silk screen posts a poetic melody 4. Bookshelf line up a precise order while backlit by and ingenious lighting design 5. Mirror panels clad on parts of the bookshelves create intertwined images of books 6. Reading space and its table position





10

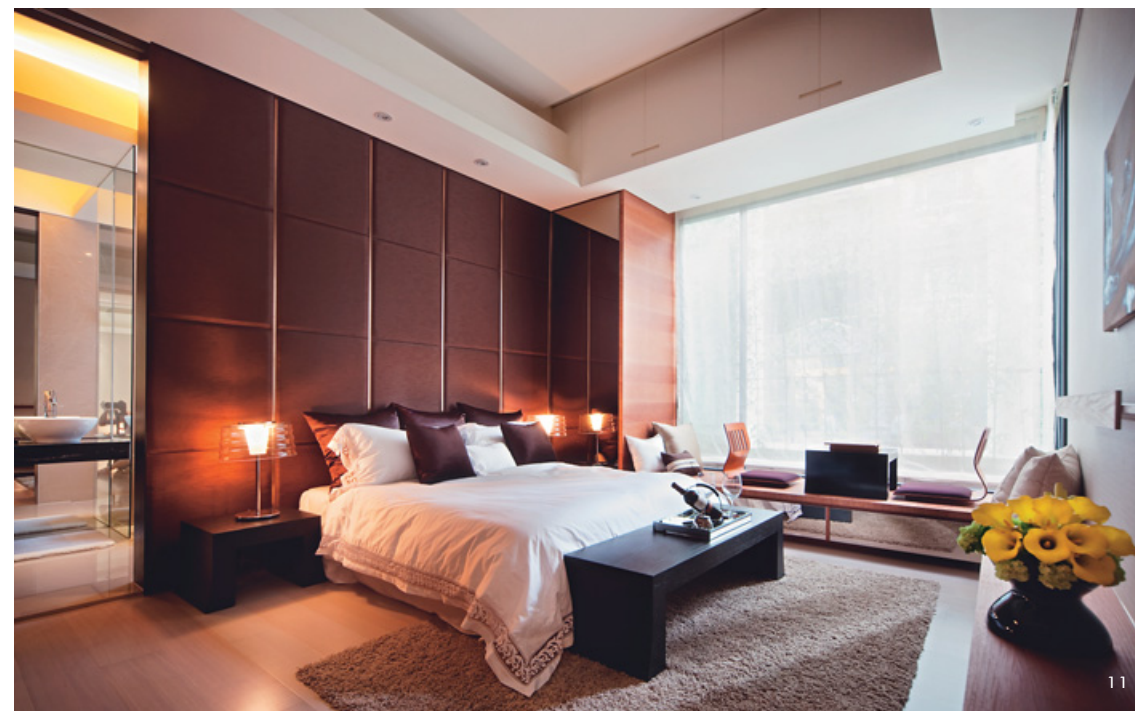
Material

1. The material used in this family design is based on earth color materials with the addition of a few bright materials such as silver white stone, tea color glass, and shining black paint. The purpose for this arrangement is to proclaim a low-profile family's values in the scholar's tradition.

Communication Note

The dialogue between the designers and the client mostly focused on the right values to be expressed through spatial layout and ambience shaping. Client needed a very easy-to-be used space that satisfied the needs of storage, living and reading. Material selection and the right colors were carefully discussed in both design and construction.

Translated by Ray S.C.Chu & David Mark Riz



11



12



13



14

7. 廳區透過視感疊合的共生關係，重構了彼此的尺度。8. 客廳家具儘可能的壓低，讓L型沙發、茶几更貼近地面，表達悠閒無拘的開闊感。9. 餐廳使用整片的銀白龍石材桌面，牆面則裝置一幅幾何造型的布畫，兩者在自然與手作的對照下產生了趣味性。10. 平面圖。11. 運用L型長檯連結閱讀坐區與電視櫃，利用樓高三米六的特色，在高處暗藏收納規劃。12. 主臥化妝檯。13. 小孩房，安排活動滑梯方便貯物存取，增添空間的趣味性。14. 長輩房規劃閱讀區，利用鏡面貫穿場域。
7. Spatial layering effect redefines the spatial borders 8. Particularly low-scale furniture pieces open up more space for air and vision 9. Silver white stone table and abstract paintings layer into an interesting landscape 10. Plan 11. 3.6 meter high space and its reading space layout 12. Dressing table, in the master bedroom 13. Child's room and a slide, fun, playful and useful as well 14. Parent's room and its reading space