

# Opening 開卷

設計者」 瓊奕國際設計工程有限公司 / 方信原  
參與者」 洪于茹 胡貞筠  
攝影者」 鄭鼎  
空間性質」 單層集合式住宅  
坐落位置」 台灣  
主要材料」 海島型木地板、礦物水泥、大理石（銀河灰、黑白根、小雕刻）、白色冷噴漆、木皮、鐵件、PVC 中空板、玻璃、珪藻土、手作金屬漆、壓克力  
面積」 72.6 坪  
項目年份」 2020 年

Designers」 Wei Yi International Design Associates / Shin-Yuan Fang  
Project Team」 Teresa Hong , Amber Hu  
Photographer」 Dean Cheng  
Category」 Residence  
Location」 Taiwan  
Materials」 Wood flooring, mineral cement, marble (galaxy ash, black and white roots, small carvings), white spray paint, wood veneer, iron, PVC panel, glass, algal soil, hand-made metallic paint, Plexiglas  
Size」 240m<sup>2</sup>  
Project year」 2020

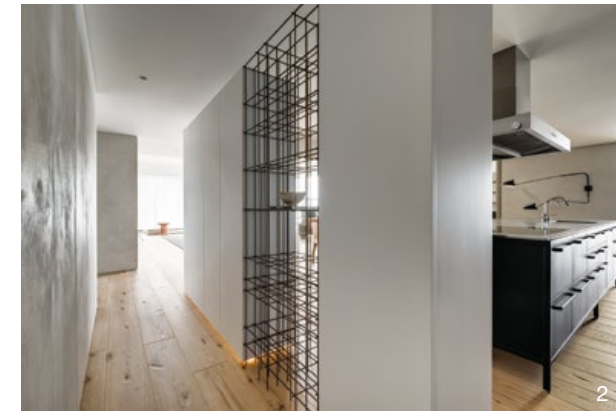


在片狀牆體與圓柱結構的構築之下，佐以變化萬千的光影，使生活空間散發出醇厚的韻致；精準又內斂的設計完美演繹出居住者的生活態度。

開卷，意指讀書，不僅是一種興趣，更是一種生活態度，「藝術與文學的涵養，來自於生活的累積」，是方信原設計師為本案所下的註釋。基地坐落於台北市知名建案中，緊鄰台北 101 與象山，有著絕佳的地理位置及生活機能，建案由知名白派建築大師理查·邁爾（Richard Meier）操刀，他善用幾何形、大面玻璃及純白色調，藉此與自然產生和諧關係；方信原設計師梳理上述白派建築元素後，將其轉譯成室內設計的三個方向，分別是：結構機能、空間意境及生活態度，再結合基地條件與業主對居住環境的藍圖和想像，跳脫制式的豪宅設計概念，透過大器又不失優雅細節的手法，交織出時尚與侘寂相融的畫面。

## 結構的和諧共存

設計師保留了建物原有的三根圓形立柱，並運用增設的片（塊）狀及薄膜牆結構，堆疊出空間層次，亦形成律動感，再依據業主對家的初步想像，統合出適切的平面布局。方信原強調，滿足機能需求是作為設計師最基本的要求，如何提升空間價值、精準拿捏視覺的平衡，則是設計者個人美感與內化功力的表現；空間的好與壞並非取決於軟硬裝的價格或種類，而是專注於細節的協調，編排出最適合的居住尺度，如何讓空間保有鮮明的設計精神，又能符合業主的生活習性，是他認為最有趣的設計議題，



1. 入口處的薄膜牆以 PVC 中空板和玻璃製成，為空間帶來隱隱約約的穿透感。2. 不到頂的鞋室櫃體略隔出玄關與公區的界線；衣帽間隱於牆面，無形之中建構出完整機能性。  
1. The entry vestibule partition is made of PVC and glass panels, giving the space a sense of penetration but vague connection. 2. The partial height vestibule storage serves as boundary separation between the entrance and the public area, and the hidden coat closet in the wall completes the functional requirement.

## Shin-Yuan Fang



瓊奕國際設計工程有限公司 / 方信原  
成立於 2003 年，設計師方信原畢業於國立藝術專科學校及中原大學室內設計系研究所碩士，曾任職於大元聯合建築暨設計事務所及李肇勳室內設計顧問有限公司。常透過城市旅遊的方式，進行城市人文的觀察及研究。事務所致力於將低度設計運用於各項規劃，並探討人們在低度的空間裡，各層面所產生的影響。  
公司作品多次登上國內外知名媒體，如德國《PLACES Of Spirit》、義大利《ELLE DECOR》、義大利《Marie Claire Italy》、紐西蘭《Home Living》、俄羅斯《Interior the best》等刊物，並獲得如台灣 TID Award、香港 APIDA 獎、中國 IAI 獎、英國 WAF INSIDE Awards、德國 iF、德國紅點、德國 German Design Award、義大利 A'Design 等國際大獎。  
於設計上持續以現代主義、宋代美學及侘寂文化為架構而成的低度設計為主軸，將文化、藝術、環保等相關元素，整合運用於生活及空間的設計中。

Wei Yi International Design Associates / Shin-Yuan Fang  
Shin-Yuan Fang received his undergraduate degree from NTUA and a master degree at CYCU. He worked for several prestigious design firms and then found his own design firm in 2003. He has travelled extensively and loves to transform his travel experience into his design works.  
Wei Yi's interior design works appears consistently in famous international media such as 《PLACES Of Spirit》, 《ELLE DECOR》, 《Marie Claire Italy》, 《Home Living》 and 《Interior the best》. Many of his works have won design awards such as the TID Award in Taiwan, APIDA Award in Hong Kong, IAI Award in China, WAF INSIDE Awards in England, iF in Germany, Reddot and German Design Award, etc.  
Shin-Yuan Fang prefers a modern style infused with Chinese and Japanese aesthetic philosophy; he loves to use eco material in artistic arrangements.





3. 多向性的玄關不具方向指引功能，薄膜牆與鞋室櫃體間刻意保留廊道，提供業主創造端景的彈性。4. 整體設計調性以大地色系為主，勾勒出舒適放鬆的環境；兩根既有圓形立柱間增設的漂浮平台不僅銜接了圓柱的中心線，也可作為閱讀區。5. 方信原強調，本案雖使用了多種不同的材質相互搭配，但視覺感受卻十分融合。6.7. 老台檜製成的茶几，與水泥底座和皮革墊製成的漂浮平台，捎來一股粗獷與精緻質感的碰撞。

3. Multi-directional entrance vestibule deliberately integrated with the corridor width, provides flexibility to allow owner to set up a visual focal point at end that extends into the space. 4. The overall design mainly uses an earth tone color scheme which outlines a comfortable and relaxing environment. A floating platform between the two circular columns also serves as a reading area. 5. Designer Fang explained that although a good collection of different materials were used they are deliberately organized to create an integrated visual experience. 6.7. The juxtaposition of an aged wooden coffee table and chic floating leather platform collide to create a rough and delicate textural contrast.



也是過程中最大的挑戰。業主個性豪爽，平時熱愛閱讀與烹飪，期望生活動線上處處可輕鬆拾起書本，餐廚區亦是日常重心，同時，也欲保留空間的開闊感，弱化隔間的存在，讓整體視野連貫寬敞；有鑑於此，設計師將開放式中島視為中心，再利用圓形立柱旁的兩個高度一致（140公分）的網狀鐵架，圍塑出「V Core」，在不增加隔牆的前提下，這個V字形無形卻清晰地區分客廳、休憩區、餐廳三個場域，讓視線範圍極大化，維持開闊性之餘，也使空間的意蘊更加綿長串聯。

此外，本案引入「皮影戲」意象，在入口玄關處增設一面以PVC中空板結合玻璃的「薄膜牆」，行走間的剪影或光線的朦朧穿透皆深化了空間的脈絡，方信原進一步解釋道，一般的住宅玄關會隱約提供方向的導引，但在「開卷」一案中，玄關的薄膜牆與鞋室櫃體不具任何指引性，他企圖營造一個多向性的領域，不論向左向右皆可與不同居家風景相遇；長條塊狀（鞋室櫃體）與片狀結構（薄膜牆）間刻意拉出一條過道，旨在提供業主置放藝術品形塑端景的彈性，深刻探討空間穿透的靈活可能。

#### 透過材質差異，探究細部變化

客廳揉合了實用機能與展示性，家具的陳列皆經過精確設定，圓形結構立柱構築出空間框景，在此一框景之中，前述所提的網狀鐵架與由菲利普·史塔克（Philippe Starck）設計的一字形沙發，和鄰近大面落地窗的漂浮平台，三者的高度上形成類似「階梯」的樣貌，微小之處亦能展示出設計的細膩和趣味；針對軟件選擇，業主期待物品能充滿故事性與溫度，方信原遂利用老台檜製作長形茶几，並搭配來自非洲的老件單椅、Baxter的陶土小茶几等，藉由巧妙的編排，剖析多種材質及色調交疊後的深厚關係；而漂浮平台的水泥、皮革墊、溫暖的壁爐火花，則帶出粗獷和細膩的對比，讓空間更具靈魂。考量到業主有席地而坐的習慣，僅適度配置家具數量，寬廣的面積滿足居住者隨興愜意的生活態度，天花板更看不到住宅慣用的間接光，而是完全改以單點投射的方式安排光源，點狀所暈染出的氛圍較為柔軟，也能更有效地營造情調。





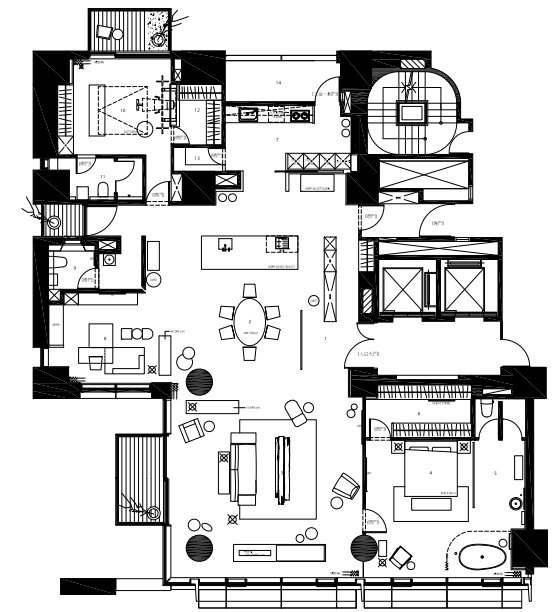
8



9



10



11

主臥房與主衛浴之間依舊採用不到頂的薄膜牆稍作劃分，特別的是，獨立浴缸被放置於相對開放的位置，僅透過紗網阻隔，且地坪並未有明顯的高低落差，方信原分享，團隊經過縝密的計算，確保水流可順暢流入排水孔內，不會向外溢出；而地坪和牆面選用相同的塗料材質，形塑一致調性。方信原設計師以建築大師路德維希·密斯·凡德羅（Ludwig Mies van der Rohe）所言的名句：「魔鬼藏在細節中」作為圭臬，他以生活為底蘊，藉由兼具理性與感性的設計思維，描繪出靜謐美好的住宅畫面，真誠審慎地對待每個微小細節，成就這個處處令人玩味的經典之作。採訪 陳映葵

Reading, is not simply an interest or hobby but more about a life giving philosophy. "The ability to appreciate art and literature comes from the accumulation of life." That is the description designer Fang used for this dwelling project. The project is located in a well-known building by Richard Meier, close to Taipei 101 and Elephant Mountain within a excellent geographical location and living functions. This project is similar to other Richard Meier buildings with geometric shapes and large glass and pure white tones to create a harmonious relationship with nature. Fang combed through the white architectural elements and translated them into the three directions of interior design: structural function, spatial quality and attitude towards life. Absent are customary luxury design ideas as this project is finished with well thought and elegant details to compose a tranquil but stylish picture.

#### Harmonious coexistence

The designer retained the original three circular columns of the building, and used the addition of a piece of the block shape and translucent wall structure. This is a composition of spatial depth with rhythmic cues that sprint off from the owner's initial thoughts about what makes an ideal home when composed of a fluid open plan layout. Fang commented that meeting functional needs is the fundamental task for a designer. Then how to enhance the value of space, accurately grasping the balance of the visual experience that is the expression of the designer's personal aesthetic and design skill performance.

The definition of a good space is not judged by cost or material selection but rather how best to manage the right scale and well-coordinated details that keep the spirit of the space. This is the greatest design challenge.

8. 在燈光計畫上，主要以單點投射的方式進行布局，點狀光源更能營造出情調。9. 薄狀線性體與塊狀體之間的微交疊，提升了場域的層次。10. 兩個高度一致的網狀鐵架鑄結了客廳與休憩區，扮演著界定場域的重要角色。11. 平面圖。

8. Lighting mainly uses a single source uplighting projection. A dot-shaped light source creates a dramatic atmosphere. 9. Visually overlapped translucent linear plane and block elements enhances the sense of spatial depth relationship. 10. Mesh frame iron structures serves as a linkage between the living room and the rest of the place, as a key element that defined the space. 11. Floor plan.



The project owner is open-minded with a forthright personality who loves reading and enjoys cooking. He imagined a home where he can easily pick up books everywhere. The kitchen dining area is the daily life epicenter, and he was very interested in maintaining the sense of spaciousness of the place. Based on this requirement, there is an open floor plan with a free standing kitchen island as the central focal point. There are two 140-centimeters mesh iron frames next to the existing circular columns, together those architectural elements form the "V Core" in the space that clearly define the living room, dining space and lounge area without adding any partition walls. The line of sight has been greatly expanded and it maintains a sense of openness.

Bringing in the concept of "shadow play" imagery at the entry vestibule, there are hollow PVC and glass panels that create a translucent wall. The hazy shadow and filtered light deepens the visual effect of the space penetration, Fang further explained that unlike the customary entry vestibule for residential unit that generally provide directional guidance to the next space in this project an "open volume" vestibule creates a multi-directional field. Regardless of turning left or right, one will be greeted with different scenery. A passageway is deliberately pulled out between the long strip of blocks (shoe cabinet) and the translucent wall to provide spatial penetration with flexibility for the owner to explore artwork display at each view direction end point.

#### Explore the details through material differences

The living room is a combination of practical function and display show case, each furniture piece was

12. 內廚區參考中島形式進行訂做，並以玻璃拉門分隔內外廚。  
13. 中島是住家的核心。透過漸層架構的運用，使視覺效果極大化，強化人與空間層疊的關係。

12. Custom made inner kitchen counter and cabinets echoing the Vipp kitchen island system in the open space. Sliding glass doors allow the owner to separate the kitchen. 13. A Vipp kitchen island is the focal point of the project. Carefully composed architectural elements deepened the visual effect and greatly enhance the spatial relationship between the human and spatial flow.



12



13





14



15



16



17



18

selected and placed with deliberate thoughts. The existing rounded structural columns create a spatial frame, and within the visual frame is a carefully composed scene with the mesh iron frames and a linear shaped sofa designed by Philippe Starck. A floating platform is adjacent to large floor-to-ceiling windows so the three form a "ladder"-like appearance at height with subtleties that show the delicateness and playfulness of the design.

The owner expected the interior finishes to be worthy of storytelling and convey warmth. Fang collected an antique wooden long-shaped coffee table and with old single chairs from Africa such as the classic Baxter table and through ingenious arrangement to created dialogue. The contrast of rough concrete base with delicate floating leather matted platform next to the warm fireplace sparks brings out the soul of the space.

Considering the habit of the owner who enjoys casually sitting around on the floor there was only moderate allocation of very few selective furniture thereby leaving space openness to meet the resident's pleasant leisure approach about life. There is no conventional residential recessed lighting in the ceiling plane, Light approaching mainly uses single-source uplighting projection. The light source projects a softer atmosphere effectively creating a more dramatic mood.

The master bedroom and bathroom are only slightly separated by partial height translucent wall. More interestingly, the free standing bathtub is placed in a relatively open location only enclosed by silky screen and there is no visible floor level change for drainage, Fang shared how the design team precisely calculated the drainage slope to ensure that water can flow smoothly into drainage without overflow. For continuity and consistency the floor and wall finishes were deliberately applied with same special finish paint.

Sincere and prudent handling of every small detail is a lesson from Mies van der Rohe, Fang orchestrated a tranquil yet playful dwelling that is balanced with rational thinking and emotional design.

## 建材分析 Material Analysis

1. 利用輕薄材質，呈現薄膜牆「隔而不絕」的半穿透特性。2. 中島品牌為丹麥 Vipp，內廚則依據中島型態於國內訂做。3. 軟件皆經由悉心選配，除有 Cassina、Fritz Hansen、Baxter 等經典品牌外，更有老件家具，共同塑造空間的生命力。

1. Take advantage of the translucent material quality the design creatively creates space distinction without separation walls. 2. Featured with a Vipp Danish Kitchen island module, and complemented with custom made kitchen cabinet casework. 3. Carefully selected furniture and accessories, in addition to classic brand name pieces from Cassina, Fritz Hansen and Baxter, plus antique furniture pieces, together they shape the vitality of the space.

## 溝通重點 Communication Note

1. 開闊感是業主的首要要求，再者為處處皆可拿取書本。網狀鐵架提供書籍擺放，客廳的漂浮平台可作為閱讀區使用，主臥室亦設有書桌，可輕易沐浴於書香之中。2. 業主喜愛自然感，希望生活氛圍愜意不拘謹，因此整體設計調性較為中性，色系偏向大地色，尋求動靜之間的平衡。3. 保留建物原有圓形立柱，並增添如塊狀、片狀結構，創造出流動的自由平面。4. 除兩間臥房外，其餘空間皆採開放手法規劃。

1. A sense of openness was the primary requirement from the owner along with easy access to books. The mesh frame iron structure functions as bookshelves, provides book placement, while the floating platform of the living room can be used as a reading area. The small desk in the master bedroom allows occupants to be easily immersed in the fragrance of the book. 2. Owners love the sense of nature. Seeking a comfortable and informal atmosphere the overall design character concept was set to neutral with an earth tone color scheme color pursuing the balance between movement and serenity. 3. Retain the existing building rounded columns, and strategically introduce a block within the space to create an open plan. 4. With the exception of two private bedrooms, the entire project was design as an open plan.

14. 酒櫃主要以銅與鏽鐵呈現，木作櫃體塗鋪仿鏽漆面，藉此形成材料的串聯。15. 輕透薄膜牆的反射特性使住宅散發一股幽靜之美。16. 網架元素不僅是區域分界的要素，也是豐厚光影變化的關鍵。17. 客廁沉穩內斂，並以藝術性質的結構方式整合機能需求。18. 透過這道「缺口」展現了回看、窺視的情景，亦削弱了客廁的狹隘感。19. 主臥一隅。獨立浴缸被設定在十分明顯的位置，僅以紗網作簡單阻隔。20. 經過嚴謹的計算，設計團隊確保地坪在沒有高低差之下，水流依舊能準確流入排水孔。21. 以純淨色調呈現浴室的面貌，洗滌身體之餘也能獲得心境的舒壓。

14. Wine cabinets are made mainly of copper and rust iron, and the adjacent wooded cabinets are finished with a special paint to echo the material finishes. 15. The reflective properties of the translucent wall give the residence a tranquil quality. 16. The meshed structures are not only elements that define space but also contribute to light and shadow changes. 17. The guest toilet is calm and subdued, artistically organizing functional needs. 18. Via the "aperture" making the visual connection and lessening the narrowness sense of the guest toilet. 19. The master bedroom. The free standing bathtub is only enclosed by a silky screen. 20. With precious drainage flow calculations, the design team ensured that the floor remained level. 21. The bathroom is presented in pure tones and the relaxation of mood can be obtained after washing the body.



19



20



21