

# Promised Land

## 理想之境

設計者 | 何侯設計 / 何以立 侯貞夙  
參與者 | 尤思驊  
攝影者 | 廖慶光  
空間性質 | 住宅  
坐落位置 | 台灣  
主要材料 | 灰色大理石、胡桃木皮、銅構樓梯、清玻璃  
面積 | 87 坪  
項目年份 | 2021 年

Designers | Ho + Hou Studio Architects / Albert Ho, Jen-Suh Hou  
Participant | Ssu-Hua Yu  
Photographer | C.K.L  
Category | Residence  
Location | Taiwan  
Materials | gray marble, walnut veneer, metal structure staircase, glass  
Size | 287.6m<sup>2</sup>  
Project year | 2021



用淨朗明透的新容，盛載屋主的豐富收藏與雅致生活。

此作是位在都會精華區的樓中樓住宅，享有三面採光、外望即見開闊山景的絕佳視野。屋主夫婦均為專業人士，育有兩個學齡期的孩子，十分重視生活上的細微品質、居家閒適的恬靜時光，以及親子之間的互動相處，並以此作為新居想望，全盤委託何侯設計團隊規劃出他們理想中的生活空間。

何以立設計師回憶，這座樓中樓居家雖有豐沛採光與挑高優勢，但舊有的裝修與格局規劃卻令室內顯得擁擠、繁複，因而在設計規劃上，採取將動線減到最低、提高整體透視感之策略，使空間一改先前沉重感，換上淨簡明透的新容，用以盛載屋主的豐富收藏與雅致生活。

### 垂直構景

何以立設計師指出，此作最主要的挑戰，是梯座位置的合宜安排，主要概念是以梯座不佔空間，且能同時達成垂直動線順暢為目的，流暢地銜接兩個樓層的動線布局。

原有梯座緊鄰玄關旁，在新規劃上，設計團隊將梯座移至平面中段，緊鄰樑邊，利用樑下空間進行框景。由於梯區位在樓面中段，以方型木平台略作托高，使其像似登上一座小舞台，梯座造型亦力求簡潔輕巧，更加強調透視與線條結構。梯身兩側除了配以強化玻璃確保孩童安全，局部踏面也加入白色細扶桿作為輔助，此番造型將梯座化為鏤空屏風，不僅在客廳與視聽室之間加設了一道層次，同時無阻兩區視線互望，成為居室裡的特色構景。此外，梯身寬度設為 120 公分，在拾級而上的過程裡，梯側沿途設有展示規劃台、設於樑上的小平台，除了作為展示男主人收藏、豐富垂直動線的構景之外，亦將日常路徑藝廊化，為行進過程加添細味收藏的趣味。



### Albert Ho, Jen-Suh Hou



何侯設計 / 何以立 侯貞夙  
何侯設計奉行以設計思維來主導建築設計、室內設計、景觀設計及家具設計的原則。主持人何以立及侯貞夙在美國波士頓及紐約分別取得美國建築師執照並累積了 15 年及 8 年的工作經驗後，在 1997 年於台北成立何侯設計。在近 20 年的執業中獲得許多認可及獎項。  
何侯設計自認是業主夢想之督導者，在傾聽、評鑑、分析後提出解決方案；每一個方案均是整合功能及美學之結果。深信設計是生活的全部而非局部；設計是精密思維的表象而不是一種流行；設計的生命使於開始使用後而非完工時。

Ho + Hou studio Architects was founded by Albert Ho and Jen-Suh Hou; both are registered architects in USA and had accumulated 15 and 8 years working experience, respectively. They set up the team in 1997 and since then they have won numerous awards locally and internationally.

Ho + Hou studio Architects enjoys their relationship with clients. They love to listen and always arrive at the best solution, geared to both pragmatic feasibility and aesthetic excellence. They believe a good design is a precise process derived from observation and analysis leading to problem-solving. It is neither a fashion nor a desire quenching tactic.

1.5 米長的中島區可作為居家辦公、日常輕食、宴客吧台之用。2. 拆除繁瑣格局，呈現廓清後的建築結構，展現空間挑高優勢。

1. A five-meter-long table can be used as a working table, brunch table, and as a platform for holding finger snacks during a social gathering. 2. The spatial layout was re-arranged.



3

3. 面朝挑空區的立面均採用強化玻璃材質，突顯樓層透視與採光效果。4. 胡桃木牆面劃開公共與隱密空間，確保了使用便利與生活品質。5. 開放式視聽室讓男主人有一處品味收藏的專用空間，並且能與家人共享樂曲。6. 開放式視聽室，使用屋主的收藏品界定場域，豐富居家內涵。

3. The open court retains transparency through the use of tempered glass panels. 4. A walnut wood long wall separates the public zone and utility space. 5. Walnut wood wall and gray color marble floor in an intimate mood. 6. Open style entertainment room.

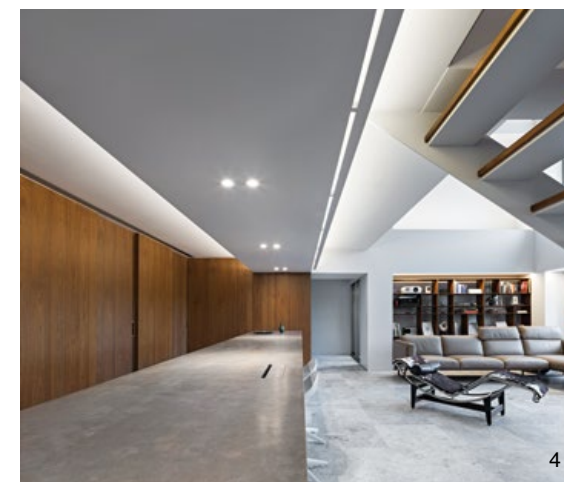
## 平面構境

1 樓重視空間的流動性，除了設有獨立玄關維繫居室隱私之外，內部方正的開放空間因順應梯座與樑位布局，呈現出田字狀的劃分，包括了前段的客廳、輕食區，以及後段的視聽室、餐廳，四區彼此透而不隔可隨使用需求彈性串連，也因刻意拉寬動線而免於相互干擾，達成了日常運用、娛樂、辦公，或是宴客活動等場地需求。在南側，設計師以一道胡桃木長牆劃出各個功能空間，牆後遮隱了客廁、儲物、廚房、家務房等多個機能場域，確保了使用的便利性與生活品質。

2 樓主要規劃為書房與睡寢空間，由三間臥房圍繞位於中心的開放式書房，使閱讀空間自然成為家人的共聚之地。此外，樓層面朝挑空區的立面採用強化玻璃材質，將挑高窗區的光線引入每一樓層裡，同時強化了樓層之間的透視互動。

## 重視個人需求

此作亦十分體貼與重視每位居住者的個人需求。女主人希望居家能具備極簡空間美學以及完善生活機能，設計團隊在此作掌握了共享區開放、機能區隱藏、私人空間機能細緻之準則，將各項實用機能置入規劃細節。在視覺統籌上，採用米白色作為基調，立面與木作則以胡桃木遮飾機能設施，使全室既是一幅回應日光的淨朗畫布，同時也有著務實便利的機能規劃。屋主對於室內空氣品質極為重視，此作前置作業經由縝密細緻的管線梳理，確保全室能自然回風、空氣淨化、效率除濕等運作，令居家全天候可維持良好的空氣品質與淨化。男主人偶有在家工作需求，5 米長的中島區可作為居家辦公據點，同時也是日常輕食或宴客時的供餐吧台。女主人喜愛閱讀，除設有開放式書房提供親子共讀場地，主臥房內亦規劃半獨立的閱讀角落作為觀景與閱讀之用。此外，男主人收藏豐富，全作設有豐富的展示角落，更規劃出開放式視聽室配置音響設備，讓男主人可盡情品味收藏，同時也能與家人共享美妙旋律。採訪 | 室內雜誌編輯部



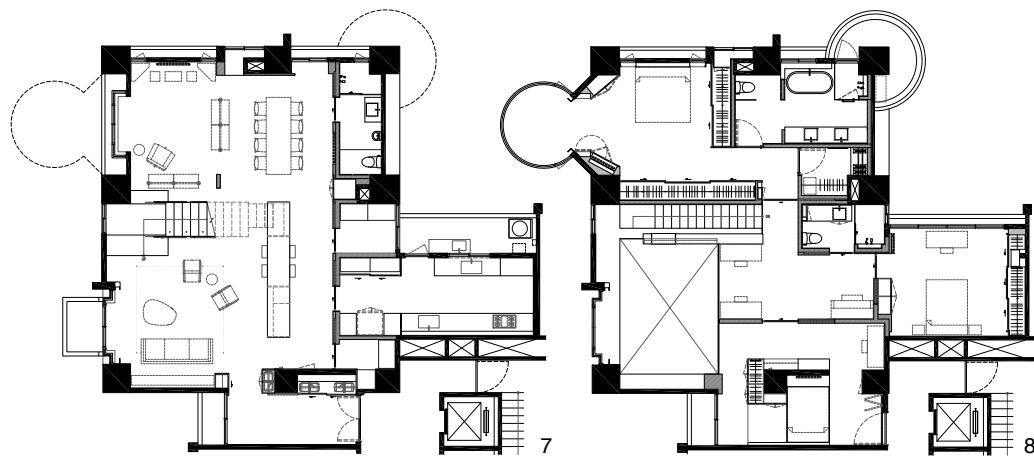
4



5



6



7.1 樓平面圖。8.2 樓平面圖。9. 將梯座化為一座鏤空屏風，為前方客廳與後方視聽室豐富了構景層次。10. 鋼構梯座強調穿透與輕盈感，階梯鋪設胡桃木踏面，令行走觸感更為舒適。11. 梯間側牆作為展示收藏的平台，將垂直動線藝術廊化。12. 2樓書房採用強化玻璃立面，確保居家安全同時引入窗外的採光與景致。13. 2樓書房也是通往臥室的過渡動線，一側採用胡桃木牆包裹裡部的衛浴空間。

7. The lower-level plan. 8. The upper-level plan. 9. The staircase is like a transparent art piece mingled into living room and audio-video entertainment quarter. 10. Details, staircase. 11. Display platforms joined into the staircase. 12. The second floor reading space enjoys good air and natural light. 13. The reading room is situated in the position leading towards the master bedroom.



9



10



11



12



13

This apartment is situated in center Taipei and enjoys an exceptional mountain view. The clients are a couple raising two young children. They value living comfort and love to enjoy quality time for family gatherings. Even though this unit had a terrific air quality the existing furnishings were tight and inefficient in terms of spatial layout. This design began by re-organizing its spatial system.

**Vertical view**

Albert pointed out that the challenge of the design was the position of the existing staircase. The new one moved from the previous position near the lobby to the physical center of the lower floor. It was slightly lifted up onto a wood platform and given visual prominence like a small stage.

The handrail is fabricated of tempered glass panels and supported by thin metal bars. The transparency of the staircase allows light to travel freely from the two sides and creates a visual depth interrupted by the up-and-down movement of the residents. Ascending the staircase, one finds displayed art works which are part of the client's collection.



14

14.15. 主臥房一隅，規劃為觀景與閱讀角落。16. 主臥室衛浴，採用灰色系石英磚構成雅致背景。17. 主臥室衛浴，採用黑色五金及衛浴設備令整體構圖更具特色。18. 衛浴空間，灰色石英磚、胡桃木色浴櫃與黑色五金，延續居家素簡雅致的風格。  
14.15. Master bedroom. 16. Master bathroom and its gray color floor. 17. Master bathroom equipped with black color sanitary equipment. 18. Bathroom in intimate ambience.

### Spatial layout reorganized

The lower-level plan was re-organized, so the public zone is divided into four zones – living room, breakfast/brunch dining at the front position, and an audio-video room and formal dining room at the rear. These zones can also be linked together as a single zone to accommodate large social gatherings. Besides the public zone, there is a utility zone where storage, bathroom, utility equipment and kitchen are settled right behind a walnut surface partition.

The upper floor is fully dedicated to bedrooms and a reading room, which is situated in the central position surrounded by bedrooms. All open to below edges are clad in tempered glass panels which invite natural light to permeate in.



15

### Design for users

The spatial layout was designed to fit the needs of the residents. The wife requested an easy to maintain and pure aesthetic space so the design team provided a flexible use main living space. White color wall surfaces and marble floors can be easily taken care of. The air ventilation system was redesigned to maintain perfect air quality and sound humidity control.

There is a five-meter-long island style platform, used as a casual working table to meet the husband's requirement. The wife's reading corner is in the master bedroom in a position where the kids can join in. The husband's art collection pieces appears in a pivotal positions and there is an audio-video quarter to entertain every family member.

### 建材分析 Material Analysis

1. 全室採用灰色大理石材作為地坪主要材料。2. 採用米白色油漆以及局部胡桃木皮構成室內的背景牆面。3. 浴室採用灰色系石英磚，並以黑色系五金及衛浴設備作為整體構圖的視覺焦點。4. 鋼構樓梯以胡桃木作為基座，樓梯本體採用實木踏板以及清玻璃組成。

1. Gray color marble floor. 2. White color paint and walnut veneer set the partition tone. 3. Gray color granite tiles and black color sanitary facilities in bathroom. 4. Staircase is structured by a metal skeleton. The flights are covered by solid wood pieces and the border is divided by glass panels.

### 溝通重點 Communication Note

此作平面規劃的主要挑戰是樓梯配置位置，必須讓樓梯不佔空間，確保垂直動線的順暢。在討論後，最終決定將梯座設於大樑旁邊，讓樓型盡量輕巧穿透，使1樓空間視覺開闊，並且流暢連接2樓公共區，樓梯位置與造型確立後，整體空間的開放性就已經達成，男主人視聽室也拍定採用開放型態，令空間流動性更加完整。

The biggest challenge of the design was to rearrange the position of the staircase, and the final solution was to place it in the physical center of the apartment. Entertainment room allows free access without being confined to a sealed room.



16



17

18