

Journey of Light

光之旅程

設計者」石坊空間設計研究 / 郭宗翰
參與者」石坊空間設計研究團隊
攝影者」李國民空間攝影事務所
空間性質」住宅
坐落位置」台灣
主要材料」實木木皮、特殊塗料、清水模、訂製鐵件
面積」複層：50 坪 頂樓露台：12 坪
項目年份」2022 年

Designers」Materiality Design / Stephen Kuo
Participant」Materiality Design Team
Photographer」K.M. Lee
Category」Residence
Location」Taiwan
Materials」veneer, special paint, exposed concrete, customer-tailored metal members
Size」165m², Roof Garden: 39.6m²
Project year」2022



在光景相伴的動線旅程裡，體驗景物變化與偶藏驚喜的細節。

此作位於都會大樓頂層，居高望遠且享有自宅露台。屋主希望給予兒女舒適開揚的生活空間，委託石坊設計團隊全盤規劃。

郭宗翰設計師談到，屋主為小家庭，重視教育且熱愛多種動靜態活動，希望居家有別傳統樣式，給予孩子健康、明亮，樂於探索與敏銳感知的成長環境。據於屋主特質與上述期望，為這座家居開啟與眾不同的可能。

在初訪現場時，設計團隊即對屋宅享有的豐美採光與景致留下深刻印象，縱然空間為複層形式，但單層面積與層高有限，因此如何善用面積、儘可能讓每個空間享有舒適光照與開揚感受，是首要考量。評估家庭動靜態活動需求，郭宗翰決定以垂直向度擴增空間感受，為這座居家構劃同感光景變化與偶藏驚喜的旅程。



以梯構景

在整體規劃上，將梯區位移至鄰近入口處的中心位置，改為柱型梯筒造型，藉由此一圓柱量體構成迴遊式動線，順勢劃開玄關端景、臨窗動線、聯往公共廳區等三向路徑。郭宗翰指出，此一安排有多重目的，除了收縮梯區範圍爭取更寬敞的樓面空間，同時避免梯座截斷採光，讓日照能儘可能透入每個角落。另一方面，藉由此一量體作為玄關端景，不僅對外保護居家隱私，梯區鄰近玄關也能使各樓層動線更有效率的連通至大門，提升日常使用的便利性。

光景相伴的動線旅程

這座家居尤其重視動線旅程的享受，以柱型梯座延伸出優美的弧牆，引導沿途的步伐與視線，弧牆與柱梯刻意令入口視線先被限縮，當行至廳區後視野轉而豁然開朗，縮放對比更為強烈。而隨著弧線衍生的角落，則規劃為半開放的閱讀角落，為居住者創造可共聚一廳，或是享受獨處的角落，隔而不斷的穿透視線，也確保了居家安全。

Stephen Kuo



郭宗翰
英國北倫敦大學建築設計研究所
英國倫敦藝術大學空間設計學系
英國倫敦市政府大學藝術暨設計國家檢定
實踐大學設計學院講師
2002 年創辦石坊空間設計研究迄今

Stephen Kuo
M.A. London Metropolitan University
B.A. University of the Arts London
Lecturer, Shih Chien University
Founder of Materiality Design, 2002

1. 開放式功能區滿足日常使用需求，同時方便屋主照顧幼童。2. 圓柱型梯區構成迴遊式動線，劃開玄關端景、臨窗動線、聯往公共廳區等三向路徑。

1. Open style layout allows flexible use of the living room. 2. Round shaped staircase dominates the lobby and directs one towards the three orientation paths, two horizontal and one vertical.



在動線旅程裡，光與景是空間中的重點。在此作，設計師並用了引光與切割手法，為空間創造了各種有趣的框景。除了鄰窗面保持通透，讓光照儘可能引入空間中，同時也在樓板、梯區進行各式開口讓光線透入的角度更加豐富。在硬體方面，則運用以鑽石切線與切面豐富空間細節，並藉由切線與切面的層次變化隱藏內部的設備管線。正如鑽石切面在光照下的瑰麗色色彩般，局部立面也以玫紅、靛藍作為亮點，意喻著切面在日照下回應的光彩，加深全作予人的精緻印象。

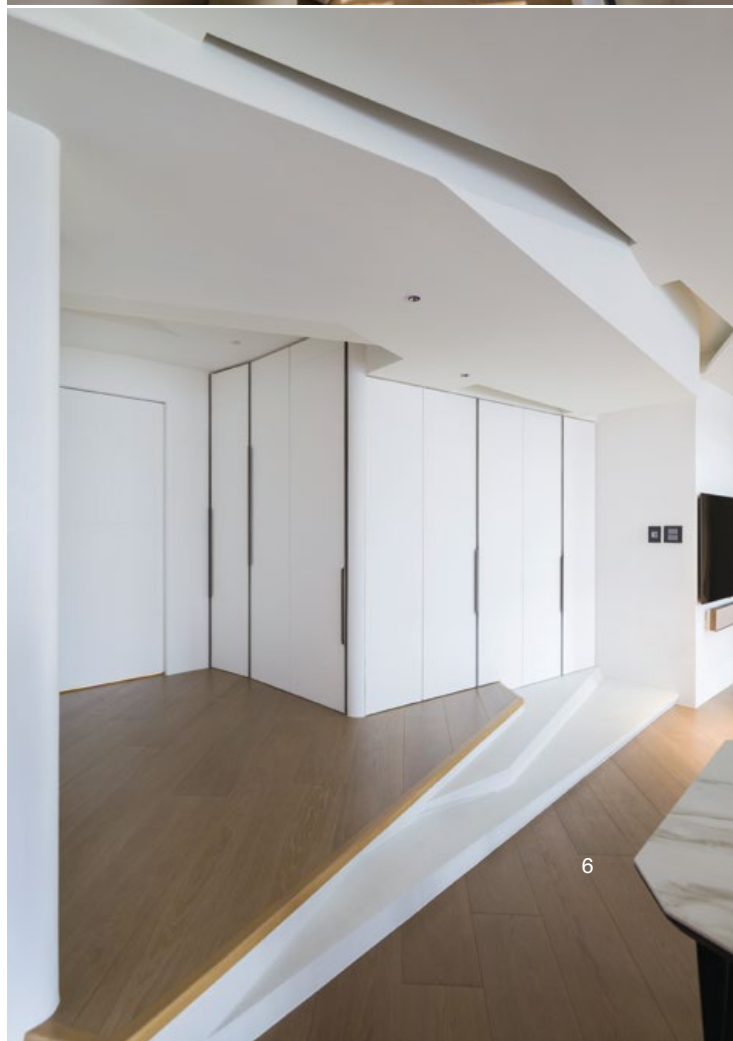
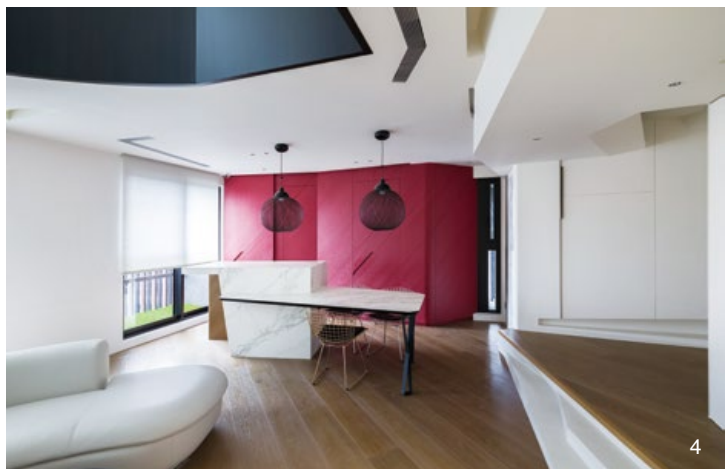
重視多元彈性

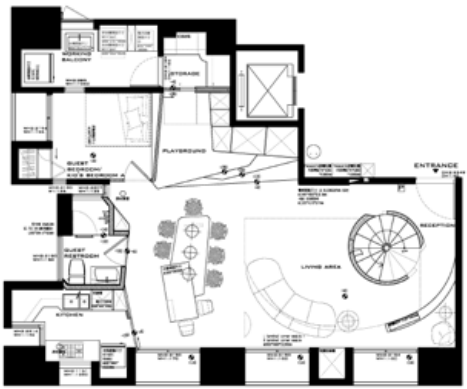
1 樓布局去傳統化，以扇形挑空區作為中心，周邊規劃各種機能空間，而環圍場域局也由開放至封閉進行漸次安排，使廳區像似一座焦點舞台，不僅盛接豐沛採光，也是每個樓層引人矚目的焦點。周邊的開放式功能區，像是餐廳、遊戲區確保了日常的實用便利，與廳區開放串連的型態亦能方便屋主關照幼童動態，或是在宴客時提供開闊場地。外圍則規劃為臥房、獨立廚房、工作間與各種儲物空間，聯同維繫室內畫面淨朗。

2 樓作為閱讀與臥房區空間，除了開放式書房區外，在沿著扇型挑空區而生的廊橋安排各種閱讀設施，扇型廊道使用玻璃扶手強化垂直視線的連通感，同時確保採光能透入裡側的開放式書房。頂樓露台規劃造景、BBQ 吧台、木平台與透明泡泡屋，親子無論日夜、晴雨都能在此進行各種活動或談心賞景，同時是與親友聚會的活動場地，滿足屋主對生活質感的期待。採訪 室內雜誌編輯部

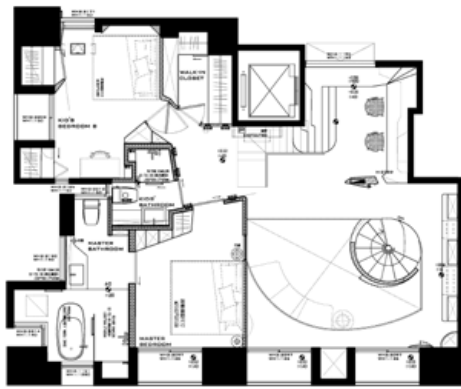
3. 以扇形挑空區作為中心，周邊規劃各種機能空間。4. 局部立面覆上玫紅色彩，意喻鑽石切面在日照下回應的光彩。5. 隨著弧牆而衍生的閱讀角落，提供了一處可享受獨處的空間。6. 架高的開放式遊戲區與收納櫃牆。

3. Fan-shaped living room. 4. Rosy color diamond shape panel surface reflect natural light with a glittering shine. 5. Reading corner's intimate atmosphere. 6. Kid's playground on the upper floor.

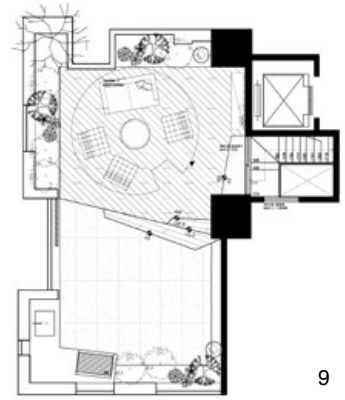




7



8



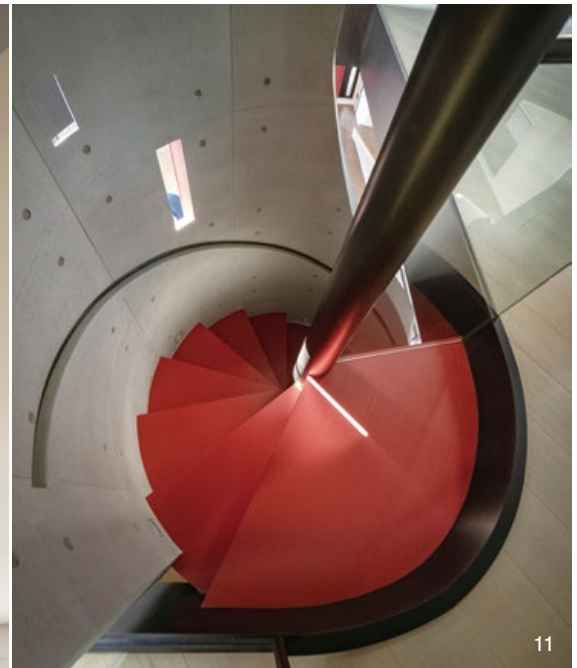
9

7.1 樓平面圖。8.2 樓平面圖。9.3 樓平面圖。10. 沿著 2 樓廊橋安排各種閱讀設施。11. 圓梯細部，刻意加大木質踏面，壁面將扶手與燈槽合一，提高垂直動線的安全性。12. 沿著 2 樓廊橋安排各種閱讀設施。13.2 樓扇型廊道使用玻璃扶手強化垂直視線的連通感。14.15. 在樓板、梯區進行各式開口讓光線透入的角度更加豐富。

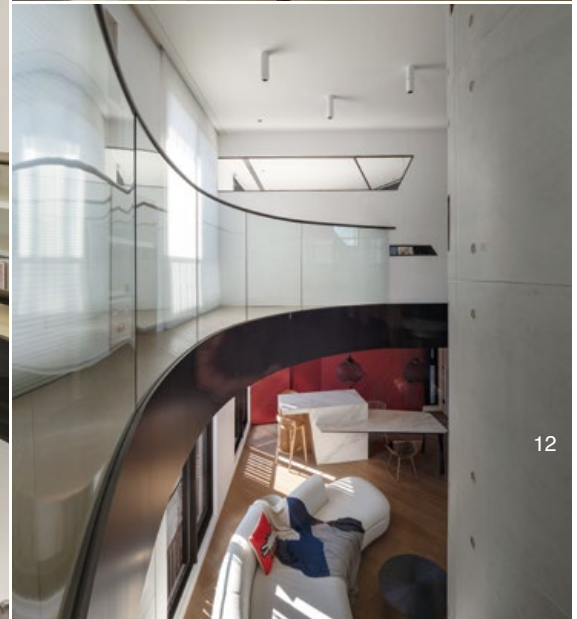
7. The first floor plan. 8. The second floor plan. 9. The top floor plan. 10. Book shelves along a linking bridge. 11. Staircase and the wood covered flights. 12. Book shelves along a linking bridge. 13. Glass handrail design. 14.15. Staircase design allows natural light to penetrate.



10



11



12



13

This unit is at the top of an apartment building and enjoys an exceptional views and a roof garden.

Stephen said that the client and family are middle-class and enjoy activities including reading and sports. The couple's demand was that the new residence have a unique characteristic to really fit the family.

Staircase is a landscape

The first impression of this apartment is its ample natural light and a staircase that leads the family to the upper level, so the biggest challenge of the project was to coordinate the needs of the family members and use this vertical link in a wise and efficient way.

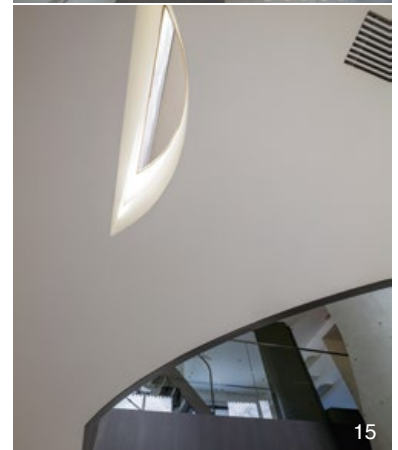
The staircase made a positional shift, moving from the central position to a place near the lobby, and has been reshaped from rectangular to a circular shape. The position easily divided the three orientation paths allowing each member to easily access to where they want to go, and the round shape forms a vivid body in an energetic way.

Light and living

Moving in the apartment is like being immersed in a fun journey where the eyes can catch views with very different characteristics. The lobby is visually suppressed by the dominating staircase and a curved wall where one making a turn will immediately find an extending view showered in natural light. Even a reading corner placed in a tiny spot enjoys the grand opening view in the living space.



14



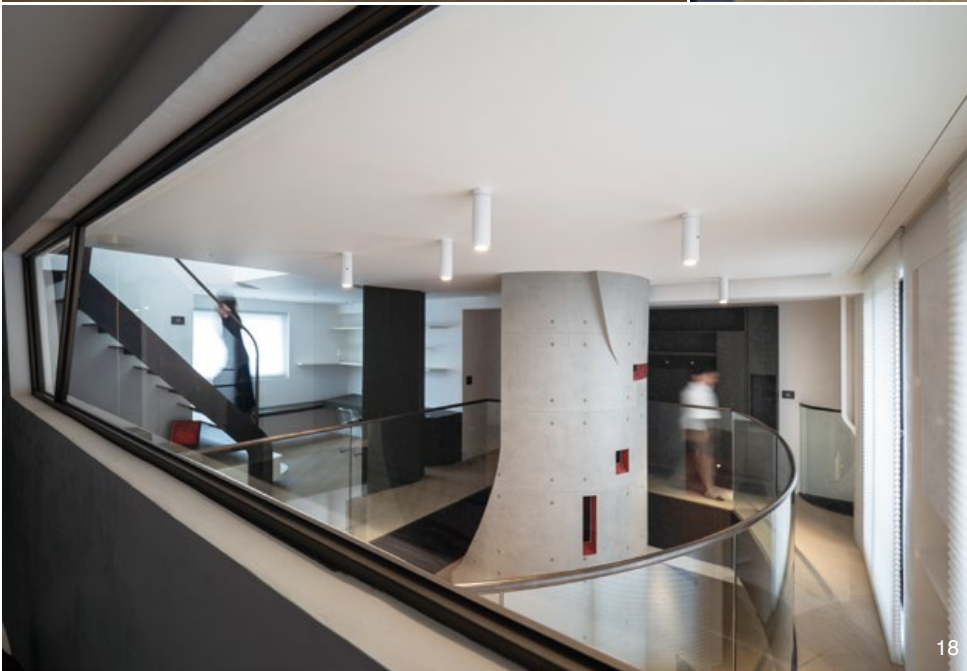
15



16



17



18



19

建材分析 Material Analysis

1. 實木木皮：用於全室木作，採用斜紋拼接使更空間細節更加別致。2. 特殊塗料：局部木皮染色處理為空間跳色。3. 清水模：圓柱型梯區與弧牆。4. 訂製鐵件：樓板收邊與欄杆扶手，強化剖面線條感。

1. Solid wood veneer covers the all-surface partitions. 2. Special paint dye wood veneer to mark color variation. 3. Exposed concrete to shape the staircase and a curved wall. 4. Tailored-fabricated metal members apply on staircase details.

溝通重點 Communication Note

本作自毛胚狀態開始設計，屋主為小家庭，重視教育且熱愛多種動靜態活動，喜歡開闊的空間感受，期望居家有別傳統樣式，並且擁有多元使用的彈性可能。

The family loves activities of all kinds and the design require a totally different layout to accommodate everybody's living demand.

Natural light is the most impressive element. Light is invited to linger on the surface of the floor yet the light is also guided to make a sudden stop where it meets a block panel that only has punctured holes to gather the light. There are some profiles in the wall shaped in a diamond geometrical cut. The facets of the unique shape reflect light in different directions. The glaring shine of the profile makes the wall panel intriguing when one makes visual contact.

Flexible space

The lower floor is designated mostly for public use. The fan shaped plan allows a single visual center while the ample size and flexible layout of every furniture piece allows the members to use the space in the way they love. The peripheral spaces includes a bedroom, a kitchen, storage and a working studio.

The upper floor is for relaxing and includes bedrooms, a reading room and a most impressive roof garden, housing a BBQ deck, outdoor bar, and a bubble house for kids. The space provides intimate comfort for every member to enjoy regardless of rainy days or harsh weather conditions.

16. 主臥房採用滑軌門片，在日間可打開個室與書廊串連。17.18. 主臥開設帶狀窗口，讓視線能看望兩個樓層的廳區，同時維繫著房內隱私。19. 主臥房與主臥衛浴。20. 規劃獨立更衣室拓增收納空間。21. 書房與連往頂樓露台的梯區。22. 頂樓露台規劃木平台與透明泡泡屋，作為親子遊戲、賞景的空間。
16. Master bedroom and a sliding door links toward a reading room. 17.18. Master bedroom and a view-casting window to the lower floor. 19. Master bedroom and master bathroom. 20. Independent walk-in closet. 21. Reading room and a ladder leading towards the roof garden. 22. . Roof garden is paved in wooded planks and a bubble house stands for entertaining the children.

