



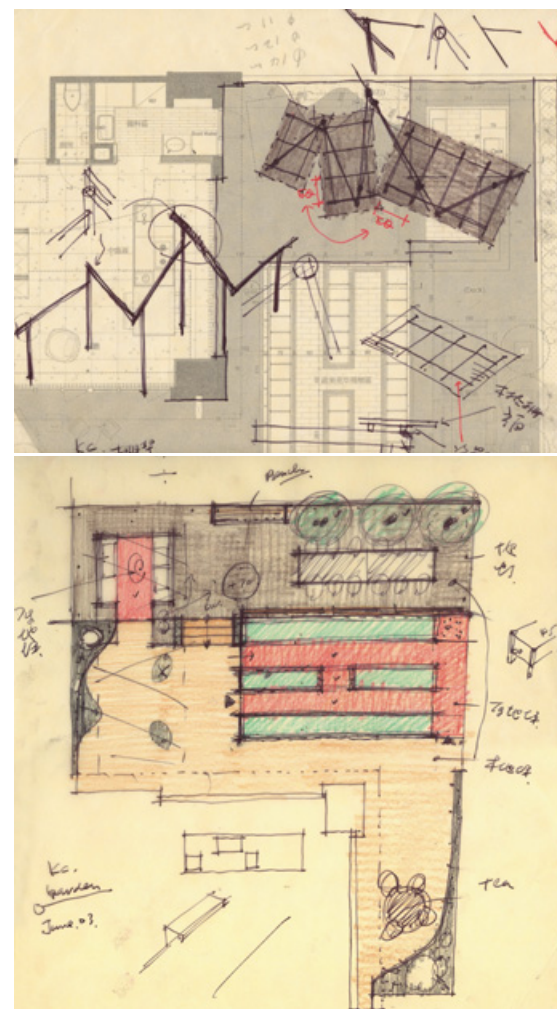
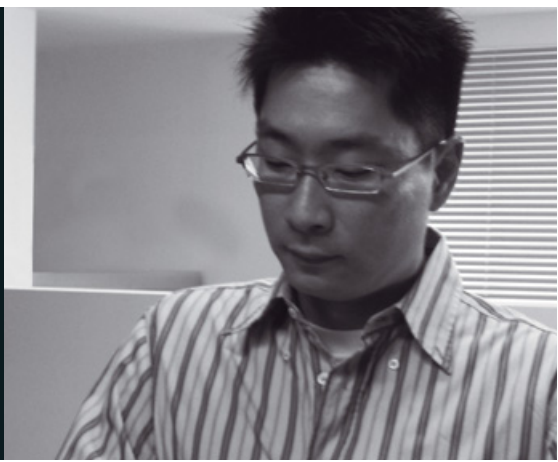
# KC Happy Garden KC 開心農場

設計者 沈中怡  
參與者 楊瓊珩 江易書  
攝影者 李國民  
空間性質 居住、攝影、庭園  
坐落位置 台北市內湖區金豐街  
主要材料 南洋檫木、不銹鋼烤漆、石材  
面積 室內16.5坪、庭園46坪  
設計時間 2011年1月至2月  
施工時間 2011年3月至7月

Designer Chung-Yei Sheng  
Participants Jill Yang, Paul Chiang  
Photographer K. M. Lee  
Category apartment and TV show studio  
Location Taipei  
Materials Zelkova wood, painted stainless element, marble  
Size: indoor 54.5m<sup>2</sup>; outdoor: 152m<sup>2</sup>  
Design period Jan. - Feb. 2011  
Construction period Mar. - July, 2011

沈中怡  
哈佛大學建築碩士  
中原大學建築學士  
現職  
中怡設計事業有限公司 負責人  
大誌工程股份有限公司 協同主持人  
淡江大學建築系兼任講師  
資格  
美國紐約州註冊建築師 AIA  
經歷  
美國紐約市 SOM 設計師 1999-2001  
美國紐約市 Polshek partnership Architects.  
設計師 1997-1999

Chung-yei Sheng  
M.A. GSD, Harvard University  
B.A. CYCU  
Experience:  
Director, Chun-Yi Design  
Co. Director, Ta-Chia Construction  
Lecturer, Tamkang University  
AIA, New York State  
1999-2001, SOM New York  
1997-1999, Polshek Partnership Architects



有別於傳統的空間比例，本案室內空間僅有16.5坪，卻擁有約46坪的戶外空間，因此將戶外與室內做結合與延伸是設計師直覺想到的手法。

業主是一對堅持健康、原味且專業的料理節目主持人KEVIN & CLAIRE，他們對於這個空間的期許，是除了居住外，還能提供電視台作為拍攝料理節目的場景，並希望攝影時能結合戶外的庭園空間作互動。

狹小的室內空間需要容納這麼多機能是這個設計的一大挑戰，由於本案空間樓高約有四米，基於空間使用的需求，必須要有一些夾層空間，但設計師屏除傳統夾層隔間的做法，將夾層營造為飄浮的樓板，並且將其打散、做出高低層次，依空間使用的功能(並考慮一樓空間機能所需的高度)分為睡眠區及另一側的服務區(包含衣物間及浴室)，兩塊樓板中央的挑空區塊讓一樓空間仍有向上延伸的效果，並且可以供攝影師由上方向下拍攝。

一樓的主軸是中央的大中島廚具，後方即為庭院空間，兩個大面的落地摺疊門打開後，即可將背景整個延伸到戶外，設計師將庭院做出幾種高低的層次變化，一方面讓空間更具趣味及多樣性，另一方面是藉此做出空間的區隔，分為用餐區、烤肉區、香草種植區及溫室等空間，KEVIN & CLAIRE也善用了這個空間，種植了數十種的香草及蔬果，於攝影時便可現場摘取烹煮，真的營造出台北市裡的一處開心農場。

在景觀的設計上，我們以「功能性」為出發，以「吃」的文化為題，在高樓林立的庭院中，自己創造出一個可以結合「吃」這件事的景觀環境，我們讓庭院的景觀有著農場的功能，區分出香草種植區、溫室區、還有可以爬藤的棚架區等，以高低層次的地坪營造出多樣性的植物生長空間，室內空間以一個大島廚為中心，再以可以完全敞開的摺門消弭室內外的界線，真的充分讓景觀與空間甚至人的生活體驗完整的融合！資料提供 中怡設計 文字編輯 編輯部

1. 業主對於空間的期許，除了居住外，還能提供電視台作為拍攝料理節目的場景。2.3. 手繪圖。  
1. This apartment fulfills the need both for living and as a TV show studio 2.3. Hand sketch



Different from the conventional proportion of spatial deployment, "KC Garden" is an apartment with only one third of interior space vs. outdoor space. This brought a challenge where the challenge meant a great opportunity to explore a new way of living style.

The people who dwell here are a couple, Kevin and Claire, who host a TV cooking show and are gaining popularity. They hope this apartment is not just a place for them to live, but also a venue for the show. Also the uniqueness of apartment should convey a message that healthy lifestyle and a good diet is close to the way of life.

To provide for so many pragmatic requirements, the space needed a big change. Two separated mezzanine levels were built; one is for the couple's bedroom and the other is for a storage space and bathroom. An open spot in between the two mezzanine floors can be used to lift up a TV camera that allows for shooting at every angle including a bird-eye's view.

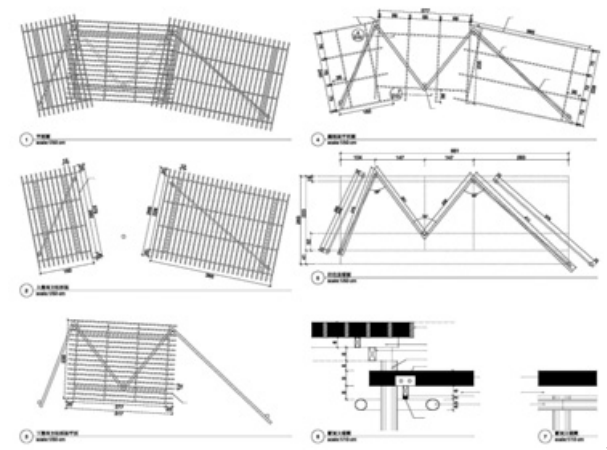
The main "element" of the apartment is an island style kitchen against a window facing the outdoor view. The balcony garden is divided into several zones at different heights; one is used as a spice gardens, one for a small green house, the other is used as a BBQ and dining deck. The extra expanding balcony garden has many edible vegetables, fruits and spices as the garden also provides food ingredients for the TV show.

Landscaping was a very important measurement for the design. Even the apartment needs to satisfy living function, it emphasized how dieting habits put great influence on space, and a living space can explain pretty well the value of life and its content.



4. 棚架細部圖。5. 一樓的主軸是中央的大中島廚具，後方即為庭院空間。6.7.集住宅、工作室、攝影棚及農場的空間機能。8. 由庭院望向一樓中島廚區。

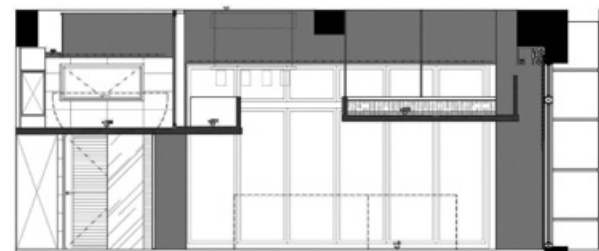
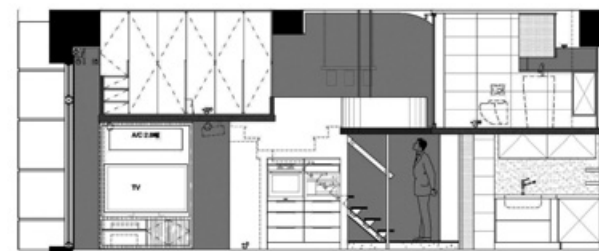
4. Canopy detail design 5. Central view from the island kitchen set next to the outdoor garden 6.7. Flexible use of the space for living and TV show studio 8. A view from the garden towards the interior kitchen set







9. 夾層服務區(包含衣物間及浴室)。10. 夾層過道。11. 夾層分為睡眠區及另一側的服務區。12. 剖面圖。  
9. One mezzanine level for storage and bathroom 10. Void space between the two mezzanine floors 11. Two mezzanine levels 12. Section drawing



12



13

14

13. 室內平面圖。14. 景觀平面圖。15. 夾層睡眠區。16. 將夾層營造為飄浮的樓板，並且將其打散、做出高低層次，依空間使用的功能分為睡眠區及另一側的服務區。17. 兩塊樓板中央的挑空區域讓一樓空間仍有向上延伸的效果，並且可以供攝影師由上方向下拍攝。  
13. Plan 14. Landscape plan 15. Mezzanine level for the couple's bedroom 16. Floating floors are divided into two zones - one for bedroom, the other for storage and bathroom 17. A void space between the mezzanine levels is big enough to locate a TV camera for the show



15



16



17





18



19

18. 夾層與地面庭園空間關係。19.20.21. 庭院做出幾種高低的層次變化，一方面讓空間更具趣味及多樣性，另一方面藉此做出空間的區隔，分為用餐區、烤肉區、香草種植區及溫室等空間。

18. Mezzanine level and outdoor garden view 19.20.21. Garden views show the divided floor levels offering space for BBQ deck, plant growing farm and a green house

**建材分析**

戶外庭院木作：南洋櫟木地板、花台、圍籬  
 戶外庭園棚架：不鏽鋼烤漆  
 門窗：氣密摺疊門  
 1F地坪：仿古面黑色石材地坪  
 2F地坪：橡木地板

**Material Analysis**

Outdoor Garden: Zelkova wood floor, gardening wood deck, wood fence  
 Outdoor canopy: painted stainless in square dimension  
 Window: air tight window style  
 1st floor flooring: antic style black marble floor  
 2nd floor flooring: oak wood floor



20



21