

Reading a Verse

朗韻

設計者」石坊空間設計研究 / 郭宗翰
參與者」石坊設計團隊
攝影者」李國民 SAM
空間性質」住宅
坐落位置」台灣
主要材料」實木木皮、訂製鐵件、木作烤漆
面積」75 坪

Designers」Materiality Design / Stephen Kuo
Participant」Materiality Team
Photographer」Lee Kuo-Min, SAM
Category」Residence
Location」Taiwan
Materials」Wood veneer, metal members, woodwork painted on the surface
Size」247.9m²



闊朗空間與精緻細節的交乘。

本案坐落於城中菁華地段，石坊設計團隊以都會人文宅邸為藍圖在空間植生意趣，用闊朗感受與精緻細節體現屋主特質。

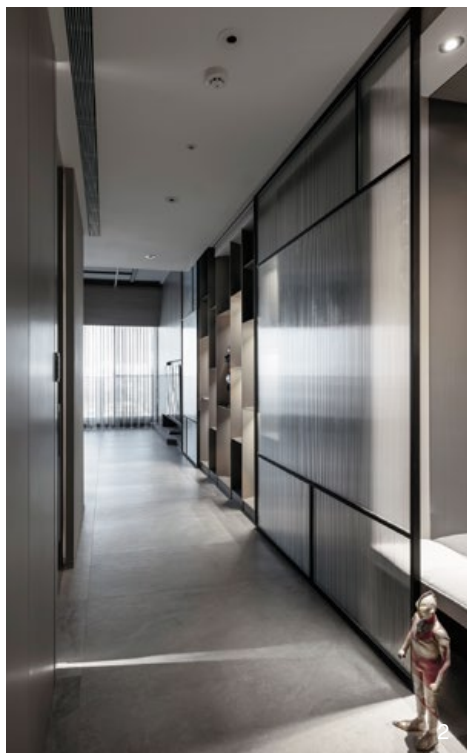
空間主要居住成員為都會小家庭，屋主夫婦與三個學齡期兒女在意家居的開闊感與收納功能。男主人收藏許多潮玩逸品，女主人則偏愛精緻風格，一酷一雅，兩相揉合後蘊生了這座個性雅邸。

明確公私屬域

郭宗翰設計師談到，屋主重視生活品質與隱私，家人之間情感緊密，空間需求除了客廳、餐廳、廚房、臥房，也要預留一間獨立客臥作為長輩房。因住宅位於高樓層，擁有良好的採光與視野，且是完整的長方型基地，平面配置著重突顯共享場域的開闊視野，同時明確公私分屬界線，守護家宅隱私。

空間原為毛胚狀態，規劃後編布為兩廳、四房、三衛，在玄關設下寬廊作為內外過渡的動線，藉轉折路徑遮隱廳內動態。整體平面配置上，將採光最佳的臨窗處留予主要的生活區塊，編入開放式客廳、餐廳，兩廳僅以家具示意劃界，彼此透過立面元素及燈飾變化，作為延展視覺或表明場域的暗號。廳區的長向窗帶依附樑柱，順勢覆加木框包飾，讓木作量體將之轉化為畫框，達成借景入室之目的。

在臥房配置上，除了刻意使長輩房鄰近客廳，方便出入活動，其餘臥室均劃在裡側，守護個人隱私。每間臥房皆重視採光效果、合理收納以及個人喜好，以因應不同階段的實用需求。



Stephen Kuo



石坊空間設計研究 / 郭宗翰
英國倫敦藝術大學·空間設計學系
英國北倫敦大學·建築設計研究所
台北實踐大學·設計學院講師
2002年創辦石坊空間設計研究迄今
擅長運用優美的線性語彙及豐腴的異性材質營造出精緻純粹、大器的哲性空間，並賦予空間獨具生命力之氛圍，藉由人文厚度的植入，構建空間生活的哲學，創造人們對空間美學的無限想像。

Materiality Design / Stephen Kuo
B.A. University of the Arts London.
M.A. University of North London
Lecturer, SJU
Established Materiality Design Research in 2002
Throughout his career Stephen has excelled in utilizing an elegant linear design language and rich, diverse materials to create refined, pure, and spacious philosophical environments. He loves to create elegance in spacious layers and imbue them with unique atmospheres. By infusing a strong humanistic dimension into his work, he constructs a philosophy of living in spaces and stimulates endless imaginative possibilities in spatial aesthetics.

1. 空間採用灰色基調，相襯的滿室收藏家具。2. 玄關利用寬廊迂迴動線，加密廳內隱私。

1. Gray color tone dialogues with the collection items of vintage furniture pieces. 2. Winding passage creates privacy control.



3. 天花板重理後，裸裡部分管線與燈帶線條共組畫面。4. 長輩房入口地坪略作抬高，用框型圍塑出一座小玄關。

用細節釀構韻味

石坊設計向來以人文溫度與深究細節而聞名，面對此作，設計團隊用擅長的折衷主義詮釋，在風格揉合、平衡對稱的筆法下，描繪立身當代的都會雅宅。

全作運用簡約卻吸睛的色彩，融合功能美學、細究質感，為空間注入個性表情。公共空間採用淡灰色背景相襯色彩鮮明、樣式豐富的家具，不拘泥於單一風格，企圖在現代簡潔的輪廓裡，並呈既個性又雅致的新貌。譬如，天花板管線重理後，縱然有局部裸裡，卻不囿限於粗獷的工業風手法，而是將黑色燈帶再作排列組合，與餐廳吊燈展開線性與結構的對話。深灰色的岩面石英磚地板為廳區設定了沉靜基調，而立面纖細的金屬壁櫃亦在暖光渲染下，為畫面增添華麗溫暖的氣息。與此同時，設計團隊在過渡動線或焦點主牆上，悉心規劃多個展示收藏的平台，為動線添加視覺遊賞之趣味，且展示架與書櫃均採用不規則分割，更增添了細節的可看性。此作亦十分重視光美學的呈現，透過燈光的明暗變化點明主副韻律，為簡潔空間豐富層次。

這座宅邸以重點色彩、精緻選材與靈活混搭呈現，除了講究嚴謹工法，家具選配也著重簡約線條與好質感，讓人在情境氛圍與感官體會上雙重享有，不高調奢華，卻處處流露令人眷戀的精緻感，展現了素美亦豐饒的大器之姿。採訪」室內雜誌編輯部



3

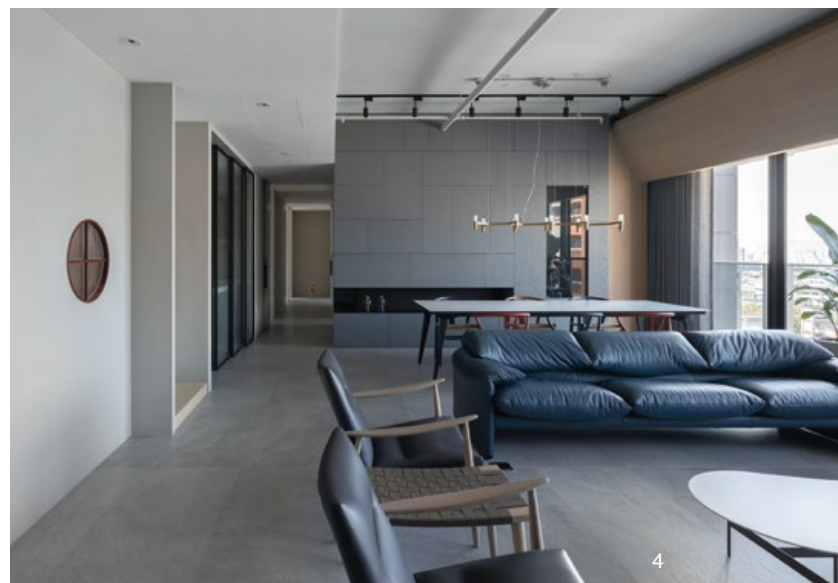
3. Exposed pipes appear visually in precise orders at the ceiling. 4. A small lobby zone in front of the elders' room.

This project is situated in a primary location, and Stephen took inspiration from the concept of the metropolis. His aim was to blend spaciousness with exquisite details to reflect the unique qualities of the residence.

The occupants are a small metropolitan family consisting of the husband and wife, along with their three school-age children. They place importance on the sense of openness and storage functionality in their home. The husband has a collection of trendy and collectible items, while the wife leans towards an elegant style.

Precise bordering between the private and public

Stephen said the homeowners prioritize privacy control, and the family members share close emotional bonds. Their spatial needs include not only a living room, dining room, kitchen, and bedrooms but also a separate guest room for elderly family members. As the residence is situated on a high floor with



4

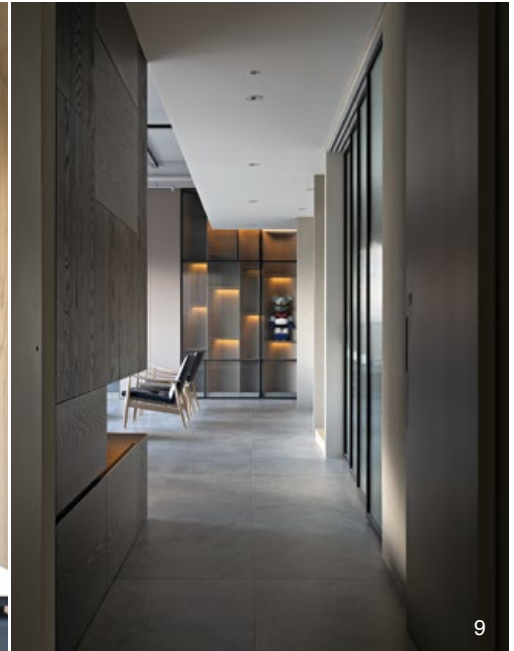


excellent natural light and views and has a rectangular-shaped layout, the floor plan was designed to emphasize the open and expansive views of the shared spaces while clearly delineating the boundaries between public and private quarters.

The space was originally in a raw state, and after planning, it was divided into two living rooms, four bedrooms, and three bathrooms. A wide corridor is placed at the entrance to serve as a transitional pathway between indoors and out, using a twist path to avoid a direct view to the interior. The layout allocates the best views to the living room, incorporating an open plan to the dining room. They are separated only by furniture as a boundary. Along the length of the living area's windows, wooden frames were added to enhance the visual appeal and transform the window views into a framed landscape painting.

The guest room for elderly family members was located near the living room for convenience. The other bedrooms are situated on the interior side, ensuring individual privacy. Each bedroom is designed with a focus on lighting, ample storage, and personal preferences to meet different practical needs at various stages of life.





5. 纖細的金屬壁櫃用暖光烘托藏品。6. 客廳與餐廳開放通透，隨著展示與收納規劃不同，為空間構築細節層次。7. 廳區的長向窗帶有樑柱貫穿，採用木框量體包飾，突顯窗景優勢。8. 餐廳後方的收納櫃採用不規則分割，不僅容易分門別類，也增添細節豐富度。9. 壁櫃覆上玻璃滑軌門，可自主規劃展示效果。
5. Fine detail metal cabinets. 6. Total link between living room and dining room. 7. Trans-versing beams in the living room are wrapped in wood frames. 8. Cabinets in the dining room have a unique visual pattern. 9. Sliding door for the display cabinet.

建材分析 Material Analysis

1. 選擇木、石、金屬作為主要材料，在簡潔空間中融入精緻的細節與質感，令空間顯得大器。2. 廳區以灰色背景為基調，襯托色彩鮮明的家具、藝術品，與空間內的多種混搭元素互構平衡。

1. Choosing wood, stone, and metal as the primary materials Stephen integrated exquisite details into the clean space, giving the space a grand appearance. 2. The living area adopts a gray background as the main theme, setting off colorful furniture, artwork, and a variety of mixed elements within the space.

溝通重點 Communication Note

1. 重視隱私與廳區的開闊感，希望能視不同活動需求彈性運用空間，同時可以關照家人彼此動態。2. 要規劃一間獨立長輩房。3. 屋主擁有眾多收藏，希望新居規劃充裕的展示與收納空間。4. 重視精緻質感與收納規劃。

1. Emphasize the importance of privacy and the spaciousness of the living area. Hoped to have the flexibility to use the space for different activities. 2. Plan for a separate guest room for elderly family members. 3. The homeowners have substantial collections and wished for ample display and storage space in the new residence. 4. Prioritize the incorporation of exquisite textures and effective storage solutions.

10. 臥房，採用木質元素與秋香綠，營造雅致氛圍。11. 臥房，臨窗處規劃休憩區、收納空間與閱讀區。12. 臥房衛浴，用雅致色調相襯簡潔線條。13. 臥房，採用灰色與木質元素，相襯每間臥室的主題色。14. 平面圖。

10. Bedroom exhibits an elegant spatial ambience. 11. Bedroom has a small quarter near the window for reading and storage. 12. Bathroom in elegant color and material. 13. Bedroom uses mainly wood materials as the main furnishing material. 14. Plan.





13

Elegant spaciousness meets exquisite details

Materiality can be tuned for human warmth and attention to detail. In approaching this project, Stephen employed his expertise in eclecticism. Through a blend of styles and a balance of symmetry, he crafted a contemporary urban residence.

The entire project showcases simple yet eye-catching colors that integrate functionality and explore textures, infusing the space with a distinctive character. In the public areas, a light gray background is complemented by vividly styled furniture. Stephen did not confine himself to a single style but aimed to present a new, personality-infused look within clean contours. For example, the ceiling pipes are meticulously organized, and while some areas remain exposed, they do not adhere to a rugged industrial style. Instead, black light strips are arranged and combined, engaging in a dialogue of lines and structure with the dining room chandelier. The deep gray stone flooring sets a serene tone for the living area, and the delicate metal cabinets on the facades, illuminated by warm light, add a touch of warmth to the scene.

In a space constructed with clean elements, this residence stands out with its focal colors, exquisite materials, and flexible mix of styles. The entire project not only emphasizes precise craftsmanship but also places a strong emphasis on furniture selection with clean lines and high-quality textures.



14