

Home Bonding

煦煦滿家

設計者」沈志忠聯合設計 / 沈志忠

攝影者」狐色影像工作室 / 徐詠倫

空間性質」住宅

坐落位置」台灣

主要材料」大理石、美耐板、系統板、薄磚、金屬、皮革、特殊漆、
超耐磨地板

面積」49.5 坪

Designers」X-Line Design / Chih-Chung Shen

Photographer」Hu-Se Image Studio / Yung-Lun Hsu

Category」Residence

Location」Taiwan

Materials」Marble, Formica board, panel board, tile, metal panel, leather,
special paint, rustic resistant floor tile

Size」163.6m²



1

Chih-Chung Shen



沈志忠聯合設計 / 沈志忠

沈志忠 1998 年畢業於倫敦藝術大學雀爾臺學院，返台後陸續創辦建構線設計有限公司與沈志忠聯合設計有限公司，並擔任負責人與設計總監職務。其設計理念是透過建構的「線性張力」探索空間本質，挖掘空間與空間相互的恆定關係。執業以降，國內外獲獎無數，歷年來囊括涵蓋亞洲及歐美等指標性設計金獎獎項，如 2019 年英國 London Design Award、2019 年加拿大 Best of Canada Design Award、2016 年義大利 A'Design Award、2008、2011、2012、2014 台灣 TID Award 四屆金獎等，更於 2017 年受邀成為義大利知名設計大獎 A'Design Award 的評審委員，同時受邀出席兩岸演講邀請，不勝枚舉。

X-Line Design / Chih-Chung Shen

Chih-Chung Shen graduated from University of the Arts London in 1998. After returning to Taiwan, he founded X-Line Design Co., Ltd. in 2005, then set up Chih Chung Shen Union Design Co., Ltd in 2013, and serves as both director and design director. The firm's design concept is to explore the essence of space through a constructed "linear tension." This allows the study of the flowing relationship between spaces as well as the constant relationship between human perceptions and space. The practice has received numerous awards, including 2019 London Design Award, 2019 The Best of Canada Design Award, 2016 A'Design Award, TID gold awards in year 2008, 2011, 2012, and 2014, etc. In 2017, Chih-Chung Shen served as a jury member of the Italian A' Design Award & Competition. At the same time, he was invited to participate in cross-strait speeches.

這個以愛為出發點的親子宅邸，是一家人的生活舞台，也是連結情感的樞紐。設計師以流動思維擊劃平面布局，打造輕盈且溫馨的場域。

「這是一座『以愛為基石』的宅邸。」沈志忠設計師如是說。長期居住於國外的業主夫妻，育有兩男一女，近期返回台灣居住，住宅對他們而言，不僅僅只是個空間，更是他們情牽心繫的歸屬。每個空間都乘載著一家人的珍貴歷程，這種深厚的情感連結，則是設計團隊著重的切角。



有鑑於業主十分尊重小孩的適性發展，親子間如同朋友般親近，情感亦十分緊密，他們不希望室內有過多隔牆、門片阻斷互動，故提出公共空間「完全開放」的需求，甚至連內廚都不需要增設拉門，期待最大化客、餐、廚三者之間的連結，增加日常的活動餘裕。沈志忠深諳業主對自由的追求，以開放式布局為整體藍圖，將公區巧妙交織在一起，寬敞的場域中，精緻的長方形大理石餐桌與中島相互輝映，成為家庭成員們共享天倫的一方天地；而書桌則是業主生活的核心，也是陪伴孩子閱讀、玩樂的角落，設計師打造動靜皆宜的空間，讓家人密切交流、滋養情感，增添歡笑與和睦氣息。

折疊手法弱化基地限制

本案坐落於高樓層，可將城市街景與遠方山巒納入眼底，設計團隊特別將沙發擺設於鄰近落地窗之處，而書房亦配置於同側，放大基地的景致優勢，同時也有助於引入充沛的自然採光，描繪明亮且開揚的畫面。沈志忠進一步解釋，在操刀格局時，他十分講求「中軸線對稱」，平面配置與天花板之間彼此呼應，在嚴謹的秩序下構築空間架構；刻意保留入口處的原始樓高，從外踏入住家的那刻，依舊挑高開闊，創造端景的高度，藉此與客廳產生高度的對比。

1. 《煦煦滿家》著重於開放式布局，扣合業主追尋自由的態度。2. 除了基礎照明外，亦透過情境光源、輔助照明等豐富且柔和室內表情；同時也強化塊體的存在。

1. Open style layout gives the homeowner free will to use space. 2. In addition to the basic lighting, the design also incorporates ambient lighting and supplementary lighting to enrich and create a soft indoor ambience.



3. 設計師以折面手法整合基地限制，藉由天花板疊砌出細膩層次。奶茶色立面強化了空間的溫暖氛圍；吧檯的綠色花紋帶來視覺的對比感。



3

3. Folding technique was used on the ceiling formation.

由於基地的結構限制，為弱化沙發上方樑柱的存在感，設計團隊運用了折疊及堆疊的手法，結合銳面、不鏽鋼和反射材質等，形塑更為寬廣的視覺效果，亦減低樑柱可能帶來的壓迫感；設計師表示，女主人對於空間的色彩應用非常要求，她喜愛偏白的暖色調，因此這道從牆體延伸至天花板的L型折面選擇以接近淡鵝黃的奶茶色呈現，襯托出溫潤氣息，而天花板的高度、色彩和材質的轉化，更是細膩疊砌出住宅層次。

量體塑造室內秩序

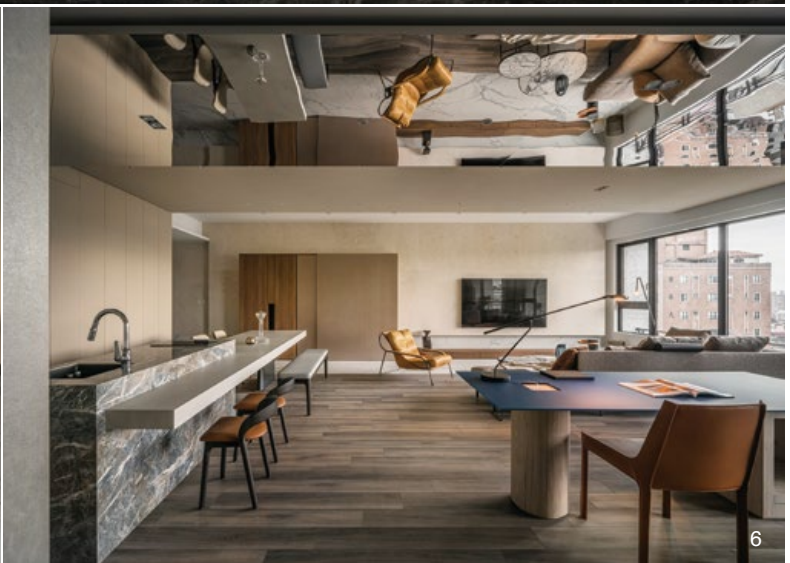
「塊體量化」是全作的重要環節，不論是電視的大理石牆面、餐桌與吧檯相嵌型態，抑或是公區底端左右兩側的對稱量體，皆以俐落簡約的手法建構，避免過多細碎線條予人繁複感受；書桌後方的底牆被設計團隊視為空間的主視覺，它身兼了展示和區劃公私領域分界的角色，異材質結合的牆面創造變化，大小不一的圓圈書擋更是其中的亮點，同時帶來一股韻律性。沈志忠說道，為突顯塊體厚薄度的差異，展現視覺上的對比，書牆層架以約6mm的鐵件製作，外面再包覆層板，使其看似擁有木質肌理，卻又能呈現出極為細緻的工法。

除此之外，材質運用亦為本作特色，有別於現今常見的特殊漆，業主提到由於他們與孩子的相處及教育方式相對開放，孩子不需過於拘謹，而是可以隨興玩樂、發揮創意，因此希冀家中好清潔、易於保養。沈志忠奠基於此原則，以耐髒、具高強度且不怕刮的材料如美耐板、可熱修復的表面材替空間打底；色調方面則以大地色系為主，而家具軟裝則交融溫暖的木質色，營塑和諧宜人的氛圍。

量身訂製的私領域

療癒且寧靜的臥室，成為最私密的避風港。主臥室以質感與低調奢華為靈感，揉合皮革、特殊漆和大理石的優雅，內斂勾勒出尊榮氣質，也帶來迷人的視覺饗宴；孩子房則以生動活潑為主調，從壁框、燈飾到色調皆量身打造，緊扣兩位男童童趣的性格。設計師分享，兩兄弟感情深厚，時常分享日常點滴，他刻意將兩張床鋪做水平和垂直面的堆疊，趣味化上下鋪的概念，同時維持了室內的高度平衡；甚至連書桌皆為共用，方便雙方討論學業。

《煦煦滿家》不僅是生活舞台，更是一家人的情感寄託，設計團隊將自由、互動與愛融入其中，讓住宅宛如一節節精彩樂章，演奏出家人的牽絆與共同成長的美好故事。採訪 | 陳映葵



4. 此作位於高樓層，可將城市景致納入眼中，同時帶來了充沛採光。5. 書桌後方牆面作為公共區域的端景，設計師將書擋以圓圈形式呈現，形塑精緻質感。6. 書桌是業主生活的核心；上方的不鏽鋼反射材質不僅消弭了樑柱的壓迫感，亦創造出光景延伸的韻味。7. 平面圖。8. 左右對稱的兩個量體以具熟修復效果的板材構建，兼具展示和劃分公私領域的功能。

4. High floor has great advantages to enjoy ample natural light. 5. Behind the reading table a view lands on the bookshelf. 6. Table is the center for the homeowner. Reflective material reduces the visual stress of the columns and beams. 7. Plan. 8. Symmetrical layout divides public and private in opposite direction.

Shen stated: this living space is built under a keystone called love. A couple who has been living abroad for a long time, raising two sons and a daughter, recently returned to Taiwan to live. For them, their residence is not just a space, but also a place of deep emotional attachment. Every space carries the precious memories of their family's journey, and this profound emotional connection is what the design team emphasized.

In consideration of the couple's respect for the development of children they do not wish to have too many walls and doors obstructing indoor interactions. Therefore, they decided to open up the public zone without excess doors. The design maximizes the connection between the living room, dining room, and kitchen, thus increasing the daily activity space. Shen adopted an open layout as the overall blueprint, skillfully intertwining the public areas together. In this spacious space a rectangular marble dining table and island table complement each other as a place for family members to share together. The study desk is the center of daily life for the family and a corner for children to read and play. The design accommodates both activity and tranquility, allowing family members to communicate closely in an intimate atmosphere.

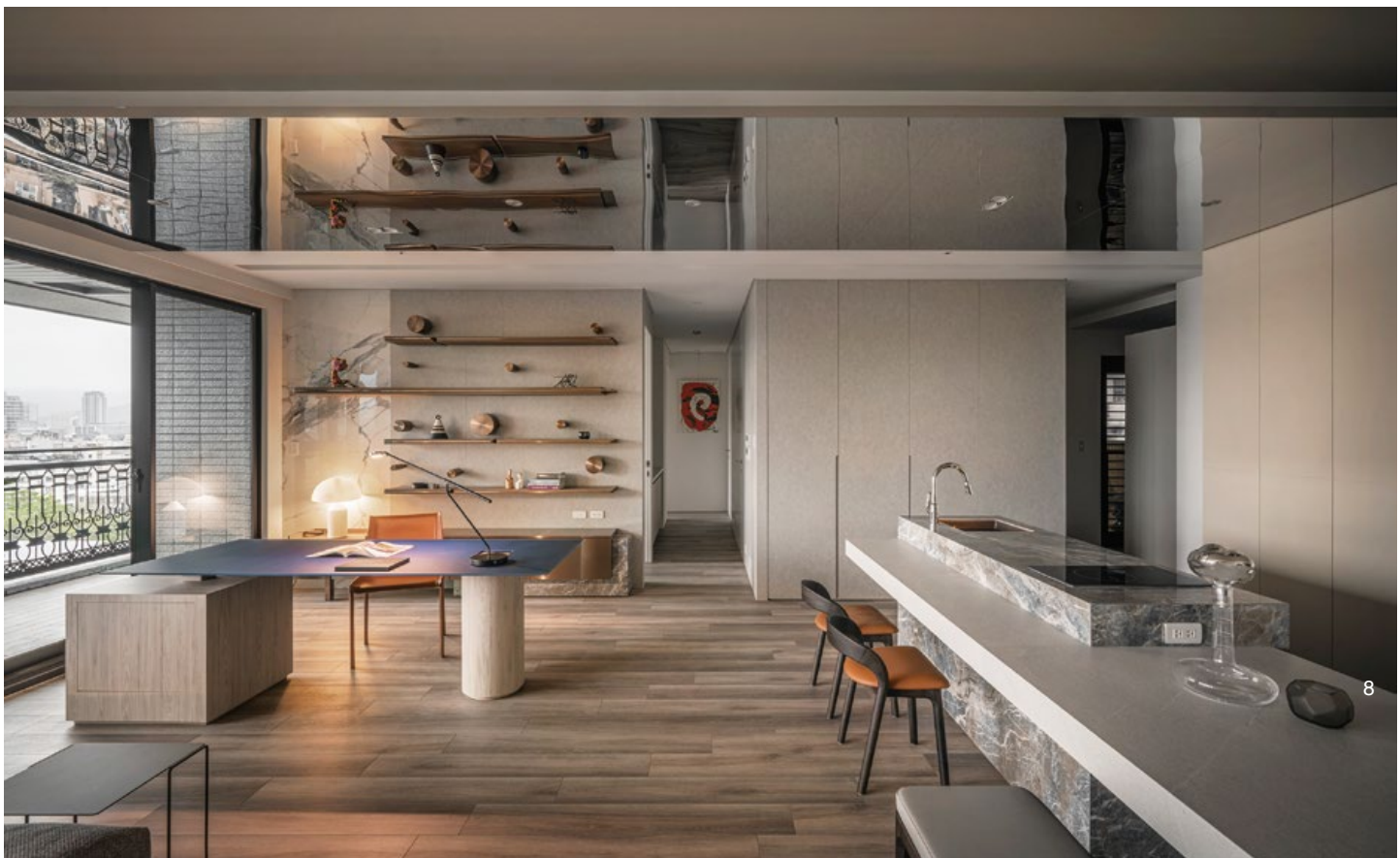


7

Weakening site restrictions

This project is located on a high floor, offering a view that encompasses the city streets and distant mountains. The design strategically placed a sofa near large windows to take advantage of the view. The study is also located on the same side, amplifying the advantages of the site's scenery and has a bright and open atmosphere. Shen further explained that the idea of "central axis symmetry." with the floor plan layout and the ceiling design complementing each other, creates a well-organized spatial structure. The design retained the original ceiling height at the entrance, but changes height as one enters the living space thereby providing a contrasting feeling between a spacious and intimate ambience.

Due to structural limitations of the site, the design team used folding and stacking techniques together with reflective materials, to reduce the presence of beams and columns above the sofa. Shen mentioned that the homeowner has specific requirements for the use of color in the space. She preferred warm, off-white tones. Therefore, the L-shaped folded surface is presented in a pale milky tea color, creating a warm and inviting atmosphere. The transformation of ceiling height, color, and material adds layers to the residential space.



8

Volumatic order

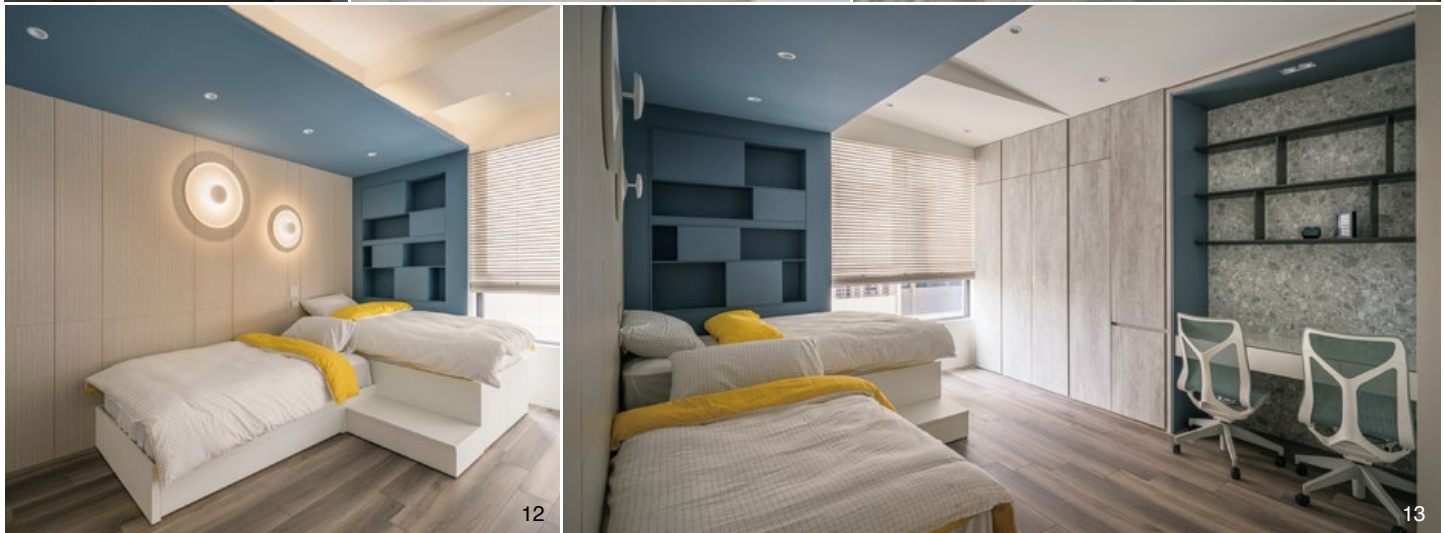
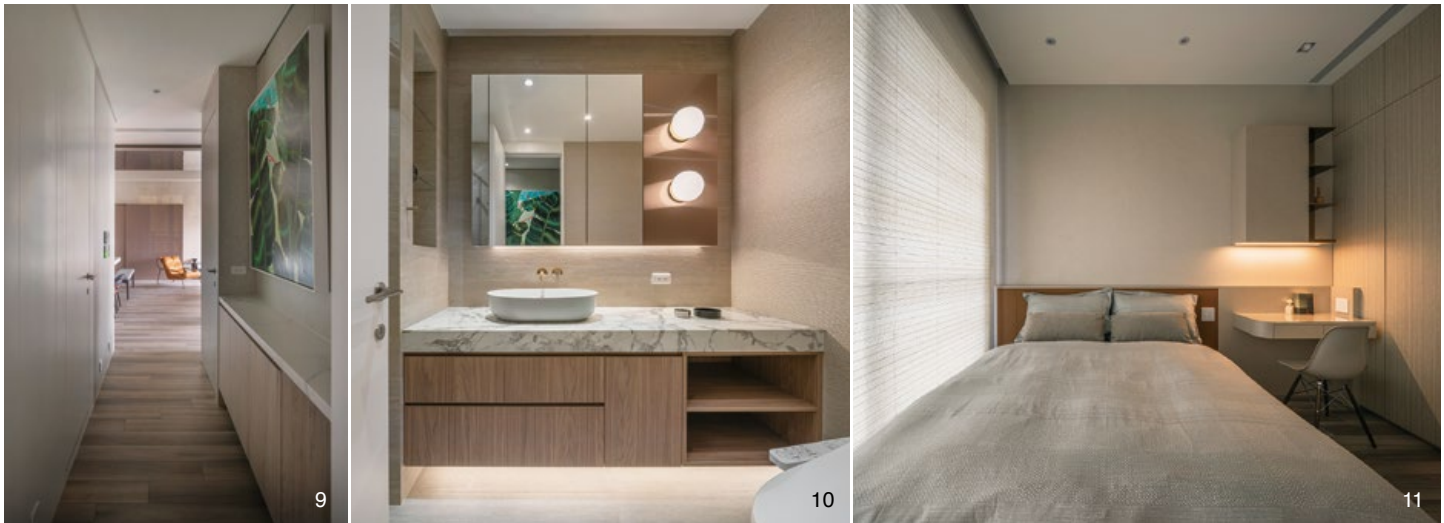
Volume and geometry are a key control of the scale in the space. A TV marble screen, dining table and bar table are all linked through a symmetrical layout. The wall behind the desk was considered by the design team as the main visual element of the space. It serves both as a display area and as a divider between public and private space. The combination of different materials on the wall creates variation, and the various-sized book holders highlight objects like art pieces. Shen explained that to emphasize the contrast in the thickness of the wall and create a visual distinction, the bookshelf wall is made of iron pieces measuring approximately 6mm, covered with an outer layer that gives the appearance of a wood grain texture. This combination achieves a delicate craftsmanship in an overall aesthetic.

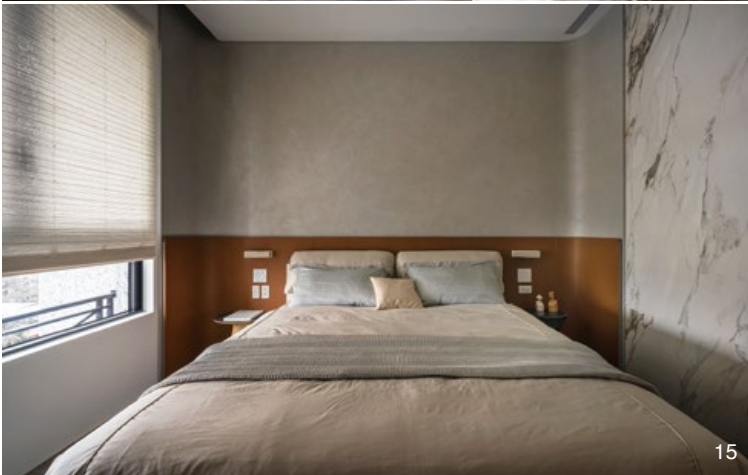
Material selection was a distinctive feature of this project. Unlike the commonly used special paints today, the couples said that they wanted their children to feel free to play and be creative without being overly restrained. Therefore, the design is easy to clean and maintain. Shen used materials that are resistant to dirt, high-strength, and scratch-resistant, such as solid surface materials like Formic board, and surfaces that can be easily repaired.

In terms of color, the design primarily focused on earthy tones, while the furniture and soft furnishings incorporate warm wooden hues, creating a harmonious and pleasant atmosphere in the space.

9. 串接公私領域的廊道。10. 孩子們使用的衛浴空間。利用小塊磚創造導角和立體效果，營塑活潑氣息。11. 素雅的女兒房。避免過多複雜線條干擾休息。12. 男孩房。床鋪堆疊型態轉化了生硬的上下鋪概念；色彩、壁燈等皆依他們的喜好設計。13. 共用的書桌和緊鄰床鋪在在顯現兄弟的好感情。14.15. 主臥室。結合皮革、特殊漆和大理石等材料，內斂又尊榮。16.17. 主臥衛浴。

9. A passage that links public and private zones together. 10. Children's bathroom. 11. A simple and elegant daughter's room. 12. Boys' room uses colors and furnishing objects according to their preferences. 13. Son's bedroom. 14.15. Master bedroom. 16.17. Master bathroom.





Customer-made intimate space

The bedroom is designed to be a soothing and tranquil sanctuary. The master bedroom draws inspiration from texture and understated luxury combining elements like leather, special paint, and marble to create an elegant and refined atmosphere. The children's room is designed with a lively and playful theme. From the wall frames and lighting to the color palette, everything was customized to align with the personalities and interests of the two boys. The designer related that the two brothers share a strong bond and often share everyday moments. To enhance the fun, he intentionally stacked two beds both horizontally and vertically, introducing an element of whimsy while maintaining a harmonious indoor balance. Even the study desk is shared, making it convenient for both to talk with each other.

建材分析 Material Analysis

1. 木質和大地色系是主要的空間表情，家具則以更為濃重的大地色突顯焦點，創造一致性。
 2. 吧檯的花紋與顏色相對而言較花俏複雜，於細節處增添對比之意趣。
 3. 天花板的不鏽鋼反射材質旨在弱化樑柱造成的壓迫。
 4. 女主人喜愛較為淺色的暖色調，需避免顏色過度偏黃。
1. Wood and earthy color tones are the primary expressions in the space. 2. The patterns and colors of the bar counter are relatively intricate and lively, adding contrast and interest to the details. 3. The stainless-steel reflective material on the ceiling was intended to diminish the sense of oppression caused by the beams and columns. 4. The wife prefers lighter warm color tones so the designers avoided too yellowish colors.

溝通重點 Communication Note

1. 業主對自由有強烈追求，設計團隊需規劃出符合他們生活態度的空間。
 2. 家中有三個小朋友，雖非學步年紀，但依舊需注意安全性與材質的好清潔。
 3. 公共空間採取完全開放的手法布局，所有機能融於一體。
 4. 以折疊手法整合結構，塑造俐落畫面。
 5. 需在有限面積中盡量滿足業主龐大的收納需求。
1. The homeowners have a strong desire for freedom, and a space needed to align with their lifestyle attitude. 2. There are three young children in the house, therefore safety and easy-to-clean materials were essential considerations. 3. The layout of the public spaces follows a completely open approach, integrating all functions together. 4. The use of folding techniques to integrate the structure and create a clean and organized visual aesthetic. 5. The design needed to offer extensive storage capacity within a limited space.